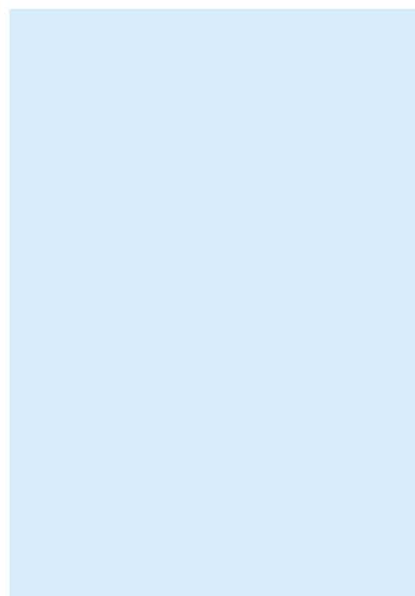
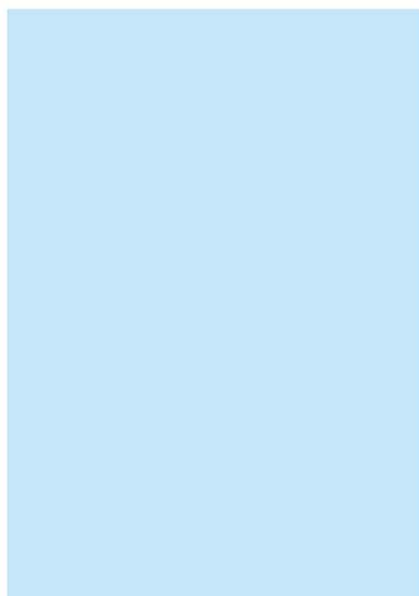
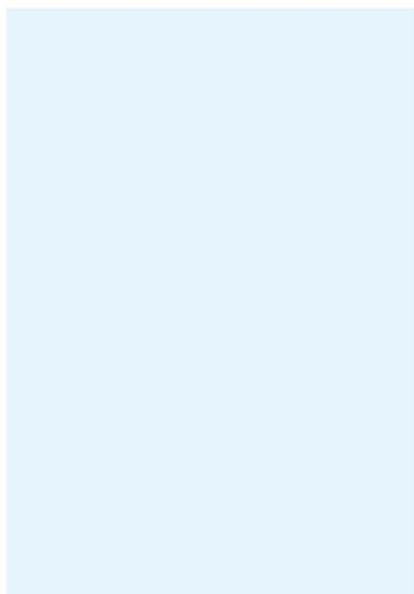


2009 Regional Directory

Illawarra and South East Region



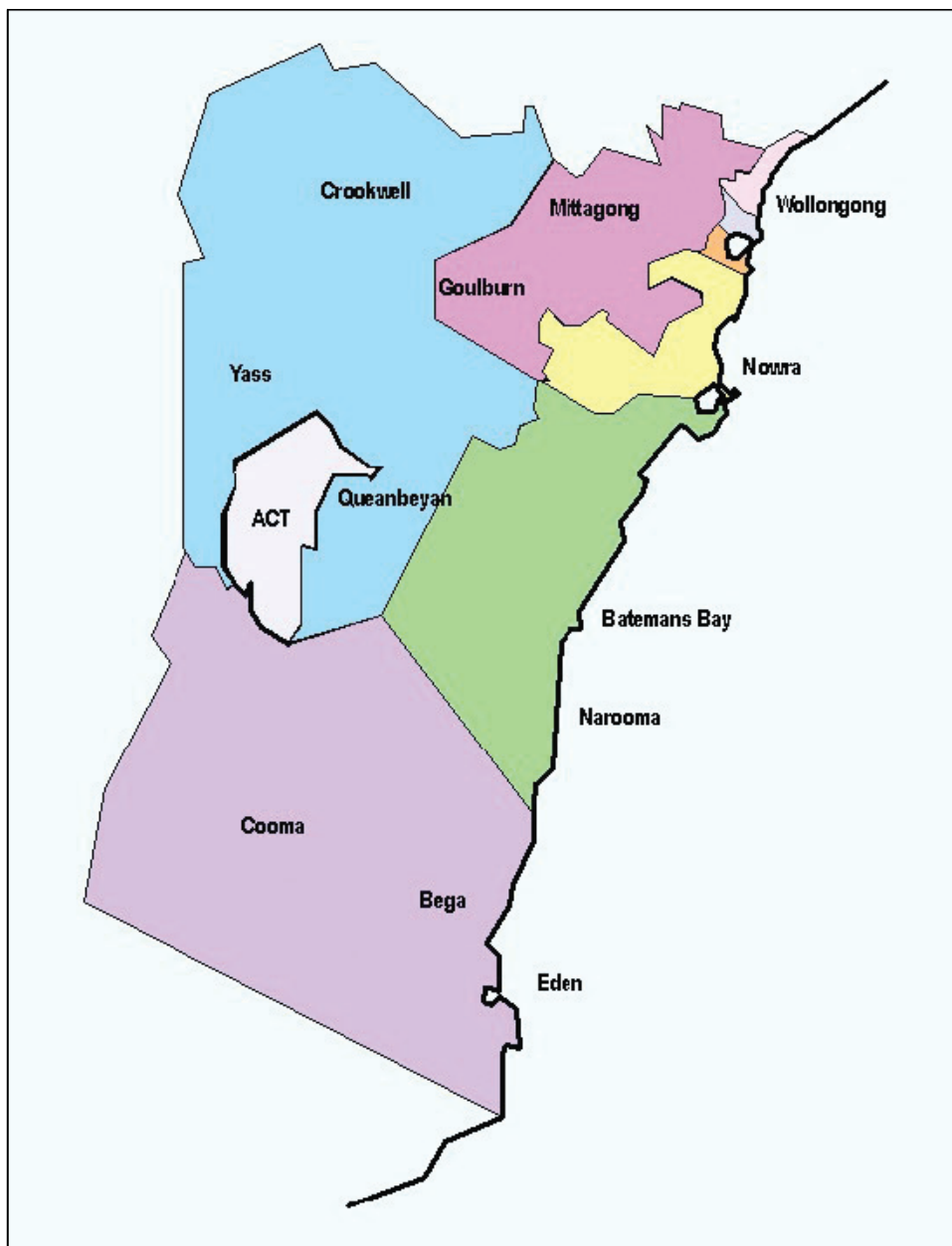
Illawarra and South East Region
NSW Department of Education and Training
5 Rowland Avenue
Wollongong NSW 2500

This Directory is updated at the commencement of each term. For comments, corrections and enquiries please contact:

Vanessa Gill
Executive Assistant
P: 4222 2959
F: 4222 2963
E: vanessa.gill@det.nsw.edu.au

Angela Byron
Professional Support Officer
P: 4222 2895
F: 4222 2963
E: angela.byron@det.nsw.edu.au

Electronic copies of this publication are available from the Illawarra and South East Region Portal



Acknowledgement of Country

We acknowledge the traditional custodians of the land within our region and pay our respect to the Elders, both past and present, and extend that respect to all other Aboriginal people across and beyond the Illawarra and South East Region.

Illawarra and South East Region

- Batemans Bay
- Sapphire Coast and Monaro
- Goulburn/Highlands
- Queanbeyan
- Shoalhaven
- Shellharbour
- Wollongong
- Wollongong North

Regional Office Locations.....	5
Organisation Chart.....	6
Regional Director's Office.....	7
School Education Directors.....	7
Portfolio staff : Professional Learning and Practice.....	8
Portfolio staff: Aboriginal Education.....	10
Portfolio staff: Equity Programs.....	10
Portfolio staff: Student Services.....	12
Portfolio staff: Regional Coordination.....	12
School-based support staff.....	14
Regional Shared Corporate Services: Asset Management.....	16
Regional Shared Corporate Services: Finance and Administration.....	17
Regional Shared Corporate Services: Human Resources.....	18
Regional Shared Corporate Services: Information and Communications Technology Services.....	18

Other Information

Page

Primary Principals Association & Secondary Principals Association contacts.....	19
Staff Services.....	19
Region and School Education Group Codes.....	19
Useful numbers.....	19
Videoconference facilities.....	20
Connected Classrooms.....	20

Additional Information

Page

TAFE NSW – Illawarra Institute Campuses.....	21
Members NSW Parliament.....	22
Members Federal Parliament.....	23

School Contact Details

Page

School Term Dates.....	24
Environmental Education Centres.....	24
Schools for Specific Purposes.....	24
Illawarra and South East Region Schools.....	25
Alphabetical Listing of School Principals.....	45

Regional Office Contact Details

Illawarra and South East Regional Office

5 Rowland Avenue
WEST WOLLONGONG NSW 2500
PO Box 1228
WOLLONGONG NSW 2500
Phone: 4222 2929
Fax: 4222 2963

Batemans Bay Regional Office

15a Citi Centre Orient Street
BATEMANS BAY NSW 2536
Phone: 4475 3300
Fax: 4475 3340

Queanbeyan Regional Office

Level 1, 24-36 Morisset Street
QUEANBEYAN NSW 2620
PO Box 1933
QUEANBEYAN NSW 2620
Phone: 6200 5000
Fax: 6299 0412

Shellharbour Regional Office

Cnr Shellharbour & Lake Entrance Roads
WARILLA NSW 2528
PO Box 118
WARILLA NSW 2528
Phone: 4251 9900
Fax: 4251 9945

Wollongong Regional Office

414-416 Crown Street
WOLLONGONG NSW 2500
PO Box 163
KEIRAVILLE NSW 2500
Ph: 4224 9200
Fax: 4224 9247

TAFE and State Office Contact Details

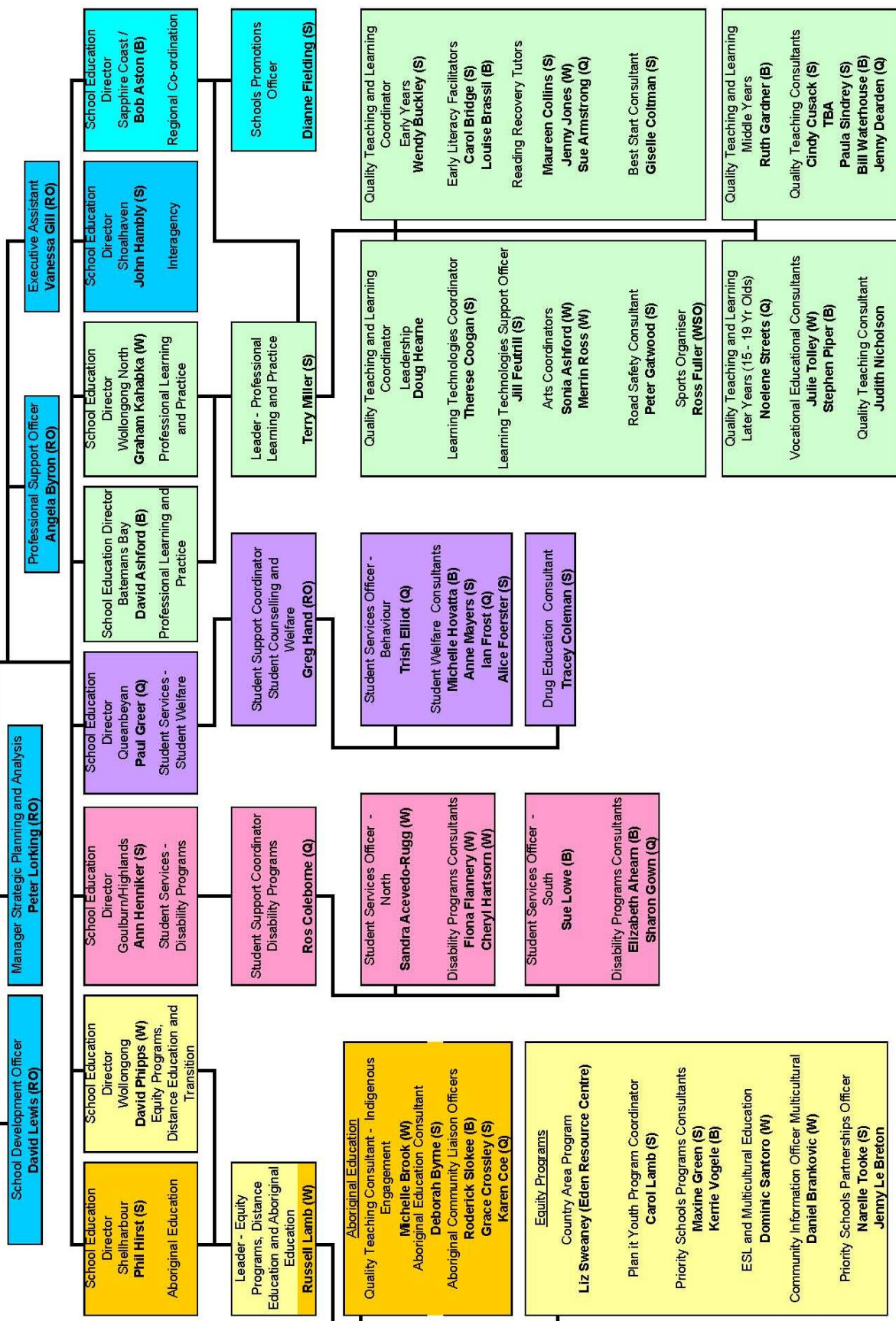
TAFE NSW – Illawarra Institute

3 Rowland Avenue
WEST WOLLONGONG NSW 2500
Phone: 4222 2908
Fax: 4226 4748

NSW Department of Education and Training

35 Bridge Street
SYDNEY NSW 2000
GPO Box 33
SYDNEY NSW 2001
Phone: 9561 8000

**Regional Director
Graeham Kennedy (RO)**



Regional Director's Office

Name	Position	Office	Phone	Fax
Graeham Kennedy	Regional Director	Regional	4222 2929	4222 2963
Angela Byron	Professional Support Officer	Regional	4222 2895	4222 2963
Vanessa Gill	Executive Assistant	Regional	4222 2959	4222 2963
Kylie McCormack	Admin Assistant (Wed, Fri)	Regional	4222 2929	4222 2963

School Education Directors

Name	Position	Office	Phone	Fax
Ann Henniker	School Education Director, Goulburn/Highlands	Shellharbour	4251 9900	4251 9945
Bob Aston	School Education Director, Sapphire Coast/Monaro	Batemans Bay	4475 3300	4475 3340
David Ashford	School Education Director, Batemans Bay	Batemans Bay	4475 3300	4475 3340
David Phipps	School Education Director, Wollongong	Wollongong	4224 9200	4224 9247
Graham Kahabka	School Education Director, Wollongong North	Wollongong	4224 9200	4224 9247
John Hambly	School Education Director, Shoalhaven	Shellharbour	4251 9900	4251 9945
Paul Greer	School Education Director, Queanbeyan	Queanbeyan	6200 5000	6299 0412
Phil Hirst	School Education Director, Shellharbour	Shellharbour	4251 9900	4251 9945

Chief Education Officers

Name	Position	Office	Phone	Fax
Peter Lorking	Manager, Strategic Planning and Analysis	Regional	4222 2896	4222 2963
David Lewis	School Development Officer	Regional	4222 2891	4222 2963

Professional Learning and Practice
Graham Kahabka and David Ashford, School Education Directors

Position	Officer	Phone	Fax	Location
Project Officer Regional Leadership Strategy	Janice Cherubini	4267 1469	4268 1463	Thirroul PS
Leader, Professional Learning and Practice	Terry Miller	4251 9927	4251 9945	Shellharbour
Quality Teaching Coordinator	Ruth Gardner	4475 3316	4475 3340	Batemans Bay
Quality Teaching Coordinator	Noelene Streets	6200 5005	6299 0412	Queanbeyan
Quality Teaching Coordinator	Wendy Buckley	4251 9916	4251 9945	Shellharbour
Quality Teaching Coordinator	Doug Hearne	4224 9222	4224 9247	Wollongong
Quality Teaching Consultant	Bill Waterhouse	4475 3317	4472 3340	Batemans Bay
Quality Teaching Consultant	Jenny Dearden	6200 5019	6299 0412	Queanbeyan
Quality Teaching Consultant	Judith Nicholson	4224 9223	4224 9247	Wollongong
Quality Teaching Consultant	TBA	6200 5015	6299 0412	Queanbeyan
Quality Teaching Consultant	Cindy Cusack	4251 9920	4251 9945	Shellharbour
Quality Teaching Consultant	Paula Sindrey	4251 9917	4251 9945	Shellharbour
Early Literacy Facilitator K-4	Louise Brassil	4475 3306	4475 3340	Batemans Bay
Early Literacy Facilitator	Carol Bridge	4251 9918	4251 9945	Shellharbour
Best Start Assessment Officer	Giselle Coltman	4251 9941	4251 9945	Shellharbour
Reading Recovery	Jennifer Jones	4272 9306	4272 9308	Wollongong
Reading Recovery	Maureen Collins	4421 0765	4251 9945	Shellharbour
Reading Recovery	Sue Armstrong	6200 5016	6200 0412	Queanbeyan
Vocational Education	Stephen Piper	4475 3319	4475 3340	Batemans Bay
Vocational Education	Julie Tolley	4224 9217	4224 9247	Wollongong
Regional Arts Coordinator	Merrin Ross (0.6)	4224 9231	4224 9247	Wollongong
	Sonia Ashford (0.4)	4224 9236	4224 9247	Wollongong
Road Safety Consultant	Peter Gatwood	4251 9947	4251 9945	Shellharbour
Regional Sports Organiser	Ross Fuller	4224 9099	4224 9391	Wollongong State Office
Clerical Support for Regional Sports Organiser	Moiria Buckley (0.6)	4224 9098	4224 9391	Wollongong State Office
Regional Implementation Coordinator (RIC) Learning Systems	Therese Coogan	4251 9943	4251 9945	Shellharbour
Regional Support Officer Learning Systems	Jill Feutrill	4251 9936	4251 9945	Shellharbour

Brief Role Statements for Professional Learning and Practice Consultants

Leader, Professional Learning and Practice – manages and coordinates all professional learning and consultancy support in curriculum across the region and provides leadership in pedagogy.

Quality Teaching Coordinators – provide specialist support to schools on the implementation of quality teaching initiatives, lead regional programs and manage consultancy teams.

Quality Teaching Consultant (Secondary) provides specialist support to schools on the implementation of quality teaching initiatives with an emphasis on support for secondary teachers and school to work initiatives (K-12)

Quality Teaching Consultants (Literacy) – improve literacy outcomes for students by assisting schools and teachers of all key learning areas to implement the Department's literacy policies, priorities and programs.

Quality Teaching Consultants (Numeracy) – improve numeracy outcomes for students by assisting teachers and schools to implement the Department's mathematics and numeracy policies, priorities and programs.

Quality Teaching Consultant – improve learning outcomes for students by assisting schools and teachers (K-12) to implement the Quality Teaching practices with a particular emphasis on literacy and numeracy.

K-4 Literacy Facilitators – provide focused literacy support for classroom teachers K-4 and executive in schools primarily through *Literacy on Track*.

Best Start Assessment Officer – provides professional learning support and coordinates the delivery of regional Best Start assessment and reporting processes.

Reading Recovery Tutors – provide intensive long term training for teachers in identified primary schools to improve reading outcomes for targeted Year 1 students.

Vocational Education Consultants – support schools in the delivery of vocational courses, ensure requirements for registration as a training organisation and support initiatives in the later years of schooling.

Road Safety Education Consultant – supports the implementation of state road safety programs and supports schools to achieve the road safety education outcomes contained in the PDHPE syllabuses.

Regional Arts Coordinator – coordinates regional arts programs and activities, such as music, drama and dance festivals, and to implement the Department's creative arts policies.

Regional Sports Organiser – Coordinates Regional and State sports events and teams, and provides support to schools regarding the 'Guidelines for the Safe Conduct of Sport & Physical Activity'

Regional Implementation Coordinator – coordinate and deliver Regional training and support of new IT applications with a focus on Interactive Classroom Training Connected Classroom Program Schools whose equipment has been recently installed.

Regional Support Officer Learning Systems – assist delivery of Regional training and support of new IT applications with a focus on the Interactive Classroom Training for new Connected Classroom Program Schools.

Leadership Strategy Project Officer – coordinates the implementation of the regional leadership strategy and principal and executive collegial groups.

Aboriginal Education
Phil Hirst, School Education Director

Position	Officer	Phone	Fax	Location
Leader Equity Programs, Distance Education and Aboriginal Education	Russell Lamb	4224 9240	4224 9247	Wollongong
Quality Teaching Consultant – Indigenous Engagement	Michelle Brook	4224 9263	4224 9247	Wollongong
Aboriginal Education Consultant	Deborah Byrne	4251 9926	4251 9945	Shellharbour
Aboriginal Community Liaison Officer	Roderick Slockee	4475 3328	4475 3340	Batemans Bay
Aboriginal Community Liaison Officer	Karen Coe	6200 5018	6299 0412	Queanbeyan
Aboriginal Community Liaison Officer	Grace Crossley	4251 9940	4251 9945	Shellharbour

Equity Programs
David Phipps, School Education Director

Position	Officer	Phone	Fax	Location
Leader Equity Programs, Distance Education and Aboriginal Education	Russell Lamb	4224 9240	4224 9247	Wollongong
Community Information Officer Multicultural	Daniel Brankovic	4224 9221	4224 9247	Wollongong
Country Areas Program	Liz Sweaney	6496 1502	6496 1406	Eden Resource Centre
Country Areas Program	Colin Gould	6496 1502	6496 1406	Eden Resource Centre
ESL & Multicultural	Dominic Santoro	4224 9220	4224 9247	Wollongong
Priority School Programs Consultant (PSP)	Kerrie Vogeley	4475 3300	4475 3340	Batemans Bay
Priority School Programs Consultant (PSP)	Maxine Green	4251 9900	4251 9945	Shellharbour
Partnership Officer, Priority Schools Program	Narelle Tooke	4251 9900	4251 9945	Shellharbour
Partnership Officer, Priority Schools Program	Jenny Le Breton	4475 3300	4475 3340	Batemans Bay
Plan It Youth Coordinator	Carol Lamb (Rel)	4251 9915	4251 9945	Shellharbour
Even Start Coordinator	Debbie Darling	4251 9914	4251 9945	Shellharbour

Brief Role Statements for Aboriginal Education and Equity Programs Consultants

Aboriginal Education

Leader, Equity, Distance Education and Aboriginal Programs – manages and coordinates Equity Programs, Distance Education and Aboriginal Education consultancy support across the region.

Quality Teaching Consultant, Indigenous Engagement – manages and coordinates Aboriginal education programs and support across the region.

Aboriginal Education Consultant – provides advice and support to schools on the organisation and implementation of Aboriginal education policies and programs.

Aboriginal Community Liaison Officers – support, develop and promote understanding and links between Aboriginal communities, schools and regional office personnel.

Equity

Leader, Equity, Distance Education and Aboriginal Programs – manages and coordinates Equity Programs, Distance Education and Aboriginal Education consultancy support across the region.

Community Information Officer Multicultural – provide advice to schools on home school and community partnerships, school enrolment for students from ESL, refugee communities.

Multicultural/ESL Consultants – provide advice and support to schools on school organisation for ESL and the implementation of multicultural education policies and practices, including the Anti-racism policy.

Priority Schools Program (PSP) Consultants – work with PSP school communities to improve equity in participation and educational outcomes of students from low socio-economic status backgrounds.

PSP Partnership Officers – works with PSP school communities to develop and maintain effective home, school and community partnerships in order to improve students' literacy, numeracy and participation outcomes.

Plan-It-Youth Coordinator – Supports schools to plan and implement a community mentoring program. Supports the training of community members as mentors to participate in the PIY program

Country Areas Program – works with CAP schools and their community to improve equity in their education while addressing issues around geographic isolation.

Student Services**Paul Greer and Ann Henniker, School Education Directors**

Position	Officer	Phone	Fax	Location
Student Support Coordinator - Disability Programs	Ros Coleborne	6200 5029	6299 0412	Queanbeyan
Student Support Coordinator – Student Counselling and Welfare	Greg Hand	4222 2961	4222 2962	Regional Office
Student Services Officer - North	Sandra Acevedo-Rugg	4224 9214	4224 9247	Wollongong
Student Services Officer – Behaviour and Learning	Trish Elliott	6200 5027	6299 0412	Queanbeyan
Student Services Officer - South	Sue Lowe	4475 3326	4475 3340	Batemans Bay
Disability Programs Consultant	Fiona Flannery	4224 9215	4224 9247	Wollongong
Disability Programs Consultant	Cheryl Hartsorn (Rel)	4224 9213	4224 9247	Wollongong
Disability Programs Consultant	Elizabeth Ahearn	6200 5017	6299 0412	Queanbeyan
Disability Programs Consultant	Sharon Gown	4475 3320	4475 3340	Batemans Bay
Student Welfare Consultant	Michelle Hovatta (Act)	4475 3327	4475 3340	Batemans Bay
Student Welfare Consultant	Ian Frost	6200 5030	6299 0412	Queanbeyan
Student Welfare Consultant	Anne Mayers (Act)	4251 9925	4251 9945	Shellharbour
Student Welfare Consultant	Alice Foerster	4251 9930	4251 9945	Shellharbour
Drug Education Consultant	Tracey Coleman	4251 9922	4251 9945	Shellharbour
Regional Coordinator Professional Learning Disabilities/Welfare	Sue Goor	4224 9250	4224 9247	Wollongong

Regional Co-ordination**Bob Aston, School Education Director**

Position	Officer	Phone	Fax	Location
Regional School Promotions Officer	Dianne Fielding	4251 9939	4251 9945	Shellharbour Office

Brief Role Statements for Student Services Consultants

Student Support Coordinator (Student Counselling and Welfare) – manages and coordinates student counselling and student welfare programs support and services across the region.

Student Support Coordinator (Disability Programs) – manages and coordinates disability and learning assistance programs support and services across the region.

Student Services Officers – assist schools with issues related to disability, student welfare and behaviour. Each Student Services Officer has strategic responsibility for specific aspects of Student Services.

Disability Program Consultants – assist principals, school and their communities with matters related to the support of students with disabilities in regular classes, support classes and special schools. They also provide information to parents/carers about the full range of services available within schools.

Student Welfare Consultants – assist schools and parents to enhance the personal, social and learning outcomes of students; to support the resolution of suspensions and expulsions; and to provide advice about suspension/expulsion appeals, child protection, anti-bullying, student welfare policies, student leadership and health related matters.

Drug Education Consultant – works with schools and teachers to develop and implement successful Drug Education programs. The Drug Education Consultant can provide training and development to support syllabus implementation; advice regarding available resources; and information on current issues.

Positive Behaviour for Success (PBS) Coordinator – manages and coordinates the progressive roll-out of PBS across the region.

Positive Behaviour for Success (PBS) Officer – supports the implementation of PBS across the region.

Brief Role Statement for Regional Coordination Officer

Regional School Promotions Officer – provides advice, training and support to schools in the planning, development and implementation of effective communication and promotion strategies.

School Based Support Staff

Position	Officer	Phone	Fax	Location
Assistant Principal Autism	Megan Waugh	4284 4527	4284 8826	Towradgi PS
Assistant Principal Learning Assistance	Llewelyn Read	4473 5257	4473 5254	Bodalla PS
	Maree Shirlaw	4251 9923	4251 9945	Shellharbour Office
	Ruth Evans (Rel)	6297 4184	6299 3350	Queanbeyan South PS
	Judy McKinnon	4224 9227	4224 9247	Wollongong Office
Assistant Principal Behaviour	Kim Henderson (Act)	4821 2759	4822 1435	Goulburn South PS
	Jennifer Almond	4296 6266	4297 2816	Mt Warrigal PS
	Nicolee Starkey	4472 4059	4472 8457	Batemans Bay PS
	Pamela Hoffmeister	6297 2619	6299 4128	Queanbeyan East PS
	Peter Passaliokis	4225 3400	4225 3388	Flametree Unit
Assistant Principal Hearing	John Davidson-Mowle	6297 2020	6299 4284	Queanbeyan West PS
	Laurel Martin (Rel)	4821 2024	4821 1395	Goulburn PS
	Maureen Jones (Rel)	4228 9120	4226 5091	Wollongong PS
	Libby Lamont	4455 1504	4454 0456	Milton PS
	Cherrie Doonan	4271 1099	4271 3511	Illawarra Sports HS
	TBA	6493 4271	6493 4425	Bermagui PS
Assistant Principal Vision	Galiema Gool	4228 9120	4226 5091	Wollongong PS
	Pat Garrety	4443 4251	4443 4835	Huskisson PS
Autism Outreach Officer	Kate Anderson	4261 2880	4262 2046	Koonawarra PS
District Guidance Officer	Penny Sheaffe (Rel)	6492 1280	6492 3965	Bega PS
	Graham Parry	4472 7233	4472 8173	Batemans Bay HS
	Rowland Hay	4256 1888	4257 1825	Oak Flats HS
	Kathy Corderoy	4284 1513	4285 1485	Woonona HS
	Colleen Hitchen	4868 1717	4868 2787	Moss Vale HS
	Rosalind Bailetti	6297 2144	6299 4282	Queanbeyan PS
	Lynn Lear	4274 0621	4276 2835	Illawarra Senior College
	Greg Hodder (Act)	4821 2750	4822 1435	Goulburn South PS
	John Wilson	4271 2787	4271 6626	Figtree HS
	Marie Flynn	4422 0401	4423 2237	Nowra PS
	Will Worthington	4232 1471	4233 1438	Kiama PS

Home School Liaison Officer	Steve Barron	4474 0738	4474 3782	Moruya HS
	Paul Doney (Rel)	4423 0679	4423 0520	Nowra ERC
	Phil Kellaway	6494 9483	6494 9364	Wolumla PS
	Allyson James	4257 2537	4257 2537	Albion Park PS
	Alan Leake	4257 2537	4257 2537	Albion Park PS
	Nyasa Wells	6200 5012	6299 0412	Queanbeyan
	Ann Willis	4821 2759	4822 1435	Goulburn South PS
	Kerry Coleman	4224 9216	4224 9247	Wollongong
	Lew Edgar	4224 9218	4224 9247	Wollongong
Out of Home Care	Mark Hawke	4472 4890	4472 8457	Batemans Bay PS
	Edwina Turner	4868 1866	4869 1116	Moss Vale PS
	Simone Whetnall	4224 9241	4224 9247	Wollongong
Positive Behaviour for Success Coordinator	Robyn Christofides	4222 2924	4222 2963	Regional Office
Positive Behaviour for Success Officer	Alex Stylis	4222 2923	4222 2963	Regional Office
Support Teacher Transition	Di Waite	4472 7233	4472 8173	Batemans Bay HS
	TBA	4224 9200	4297 2804	
	Merrill Bennet (Rel)	4229 1922	4226 5089	Para Meadows SSP
Support Teacher Integration	Annette Ewing	4472 4059	4472 8457	Batemans Bay PS
	Mitchell Brook	4256 1287	4257 1912	Albion Park Rail PS
	Christine Drinkwater	4421 6577	4423 1847	Bomaderry PS
	Carolyn Watt	6200 5025	6299 0412	Queanbeyan
	Janice Rickers	4224 9243	4224 9247	Corrimal HS
Support Teacher Early Intervention	Liz Holland	6200 5013	6299 0412	Queanbeyan
	Lynda Lavis	4472 4059	4472 8457	Batemans Bay PS
	Nikea Bennett			Towradgi PS
	Sally Simpkins (AP)			Mt Warrigal PS
	Karen Russell			Bomaderry PS
	Kathy Fearle (AP)			Moss Vale PS

Regional Shared Corporate Services

Asset Management

Position	Officer	Phone	Fax	Location
Manager Asset Management Unit	Kevin Anger	4221 8923	4221 8994	TAFE Dapto Campus
Leader AMU (Batemans Bay, Queanbeyan)	Leo Harding	4221 8969	4221 8994	TAFE Dapto Campus
Leader AMU (Wollongong, Shellharbour)	Mark Fraser	4221 6455	4221 8994	TAFE Dapto Campus
Senior Project Officer	Peter Scott	4221 8900	4221 8994	TAFE Dapto Campus
Senior Project Officer	Wayne Curtis	4221 6456	4221 8994	TAFE Dapto Campus
Project Officer	Angela Daly	6200 5007	6299 0412	Queanbeyan Office
Project Officer (Batemans Bay	Kirsten Ward	4475 3323	4475 3340	Batemans Bay Office
Project Officer	Chris Boyd	4221 6454	4221 8994	TAFE Dapto Campus
Project Officer	Brian Stephenson	4221 6459	4221 8994	TAFE Dapto Campus
Project Officer	Nicole Bates	4221 6457	4221 8994	TAFE Dapto Campus
Finance Officer	Steve Hughes	4221 6412	4221 8994	TAFE Dapto Campus
Finance Support Officer Clerical Officer	Nadine Beasley	4221 6458	4221 8994	TAFE Dapto Campus
Administration Officer	Cassandra Pennington	4221 6413	4221 8994	TAFE Dapto Campus
Furniture Officer	John Mallam	0411 208 950		TAFE Dapto Campus

Finance and Administration

Position	Officer	Phone	Fax	Location
Manager	Barry Stevenson	4221 8942	4221 8979	TAFE Dapto Campus
Regional Administration Officer – Batemans Bay	Marie Corby	4475 3312	4475 3340	Batemans Bay
Administration Officer	Denise Knight	4475 3337	4475 3340	Batemans Bay
Administrative Assistant	Diana Byrne	4475 3314	4475 3340	Batemans Bay
Administrative Assistant	Wendy Chidgey (Mon, Tue, Wed)	4475 3313	4475 3340	Batemans Bay
Regional Administration Officer – Queanbeyan	Val Blake	6200 5020	6299 0412	Queanbeyan
Administration Officer	Carol Soane	6200 5003	6299 0412	Queanbeyan
Administrative Assistant	Teresa Dowling	6200 5004	6299 0412	Queanbeyan
Regional Administration Officer – Shellharbour	Gail Costigan	4251 9937	4251 9945	Shellharbour
Administration Officer	Glenys Evans (Rel)	4251 9932	4251 9945	Shellharbour
Administrative Assistant	Di Boxsell (Rel)	4251 9913	4251 9945	Shellharbour
Administrative Assistant (RSRG)	Annette Taylor	4251 9921	4251 9945	Shellharbour
Regional Administration Officer – Wollongong	Marteyn Cull (Rel)	4224 9237	4224 9247	Wollongong
Administration Officer	Anne Faughlin (Mon, Tues, Wed)	4224 9212	4224 9247	Wollongong
Administration Officer	Lynda Willson (Rel) (Thur, Fri)	4224 9212	4224 9247	Wollongong
Administrative Assistant	Wendy Heinecke (Tue, Wed, Thur, Fri)	4224 9208	4224 9247	Wollongong
Administrative Assistant	Kylie McCormack (Mon, Tue, Thu)	4224 9207	4224 9247	Wollongong
Administrative Assistant	Cathy Parker (Mon)	4224 9208	4224 9247	Wollongong
Principal Auditor	Peter Hines	4224 9268	4224 9247	Wollongong

Human Resources

Position	Officer	Phone	Fax	Location
Manager, Employee Services Unit	Peter Feutrill (Rel)	4221 8941	4221 8960	TAFE Dapto Campus
Employee Relations Coordinator	David Ailwood	4221 8970	4221 8960	TAFE Dapto Campus
OHS Compliance & Liaison Manager	Jeff Allport	4221 6432	4221 8960	TAFE Dapto Campus
Staff Support Officer	Simon Barton	4475 3325	4475 3340	Batemans Bay
Staff Support Officer	Vanessa McAlister	6200 5023	6299 0412	Queanbeyan
Staff Support Officer	Mark Savage	4221 8955	4221 8960	TAFE Dapto Campus
Staff Support Officer	Kellie Paterson (Mon, Tue, Wed, Thu)	4224 9210	4224 9247	Wollongong
Regional Media Officer	Julee Brien	4224 9095	4225 9874	Wollongong State Office

Information and Communications Technology (ICT) Services

Position	Officer	Phone	Fax	Location
Manager, ICT Services	Nick Theodore	0414 444 564	4221 6498	TAFE Dapto Campus
Manager, Client Services	Bill Clark	4221 6478	4221 6498	TAFE Dapto Campus
Manager, Technology Systems	Aaron Little	4221 6484	4221 6498	TAFE Dapto Campus
Technology Advisor, Queanbeyan	Mark Suine	6298 4411	629 0412	TAFE Queanbeyan Campus
Technology Advisor, Shellharbour	Warren McCullough	4221 6474	4221 6498	TAFE Dapto Campus
Technology Advisor, Wollongong	Bruce Lansdown	4221 8900	4221 8907	TAFE Dapto Campus
Technology Advisor, Batemans Bay	Jane Davies	4475 3321	4475 3340	Batemans Bay
Helpdesk		4221 6478		

**Primary Principals Association and Secondary Principals Council
Regional Representatives – Presidents**

Representative	School	Phone	Fax	SEG
Garry Atkinson	Bungendore PS	6238 1317	6238 1718	Queanbeyan
Paul Bills	Yass HS	6226 1711	6226 3174	Queanbeyan
David Hogg	North Nowra PS	4422 7045	4422 9035	Shoalhaven
Chris Connor	Helensburgh PS	4294 1332	4294 3676	Wollongong Nth
Marian Grant	Wollongong HSPA	4229 6844	4226 4128	Wollongong Nth
Wayne Pryce	Nowra HS	4421 4977	4421 3284	Shoalhaven
Marilyn Gibson	Narooma PS	4476 2556	4476 2264	Batemans Bay
Tony Fahey	Narooma HS	4476 4377	4476 3953	Batemans Bay

Staff Services

Unit	Phone	Location
Administrative Staff Services	1300 338 003	Bathurst State office
School Administrative and Support Staff (SASS)	1300 338 003	Bathurst State Office
Casual Salaries – South Teacher Services – South (Salaries, Leave, Allowances, Statements of Service and Separations)	1300 338 002 1300 338 122 (Fax)	Wollongong State Office
Corporate Employee Services	9266 8174	Oxford Street Sydney
School Staffing Unit (Teachers)	131 075	Blacktown State Office
Teacher Employment /Recruitment Enquiries	1300 300 498	

Other Useful Numbers

Unit	Phone	Location
Media Unit	9561 8501	Bridge Street
Office of Schools	9561 8485	Bridge Street
Curriculum Directorate	9886 7771	Ryde
Educational Measurement	9707 6282	Bankstown
School Safety and Security	1300 363 778	Bridge Street
Employee Assistance Program : IPS Worldwide or Davidson Trahaire Corpsych	1300 366 789 1300 360 364	

Regional Codes

Illawarra and South East Region 538

SEG	Code	SEG	Code	SEG	Code
Batemans Bay	666	Shellharbour	667		
Goulburn/Highlands	663	Shoalhaven	670	Wollongong	668
Queanbeyan	664	Sapphire Coast/Monaro	665	Wollongong North	669

Regional Videoconference Facilities

Site	Videoconference Number	Virtual Meeting Room Number	Phone Number
Batemans Bay Office	20301411	5111877	4475 3331
Queanbeyan Office	20301491	5187957	6200 5009
Regional Office	20251002	5117649	4222 2930
Shellharbour Office	20301501	5626569	4251 9929
Wollongong Office	20301541	5602319	4224 9233
Wollongong Office Interview Office	20301542		4224 9232

Other facilities in the Region

Bega HS	30151905
Bega TAFE	20250881
Bermagui PS	30132521
Bomaderry PS	30132441
Crookwell HS	30132221
Eden PS	30130711
Flame Tree Education Centre	30201761
Mulwaree HS (Goulburn)	30120901
Jindabyne CS	30141531
Monaro HS	30191711
Queanbeyan DEC Satellite Studio	30120042
Queanbeyan Karabar HS DEC	30110121
Queanbeyan Karabar HS DEC 2	30110122
Wollongong SO Help Services	20301361
Wollongong SO HR Desktop 1	20301362
Wollongong State Training Centre	20301563
Wollongong West TAFE	20251001
Yass HS	30380191

Schools with Connected Classroom facilities

Bega HS	Moss Vale PS
Bomaderry HS	Nowra HS
Bombala HS	Shellharbour PS
Boorowa CS	Tathra PS
Braidwood CS	Thirroul PS
Cambewarra PS	Ulladulla PS
Corrimal HS	Waniora PS
Crookwell PS	Warilla HS
Figtrees HS	Wollongong PS
Moruya PS	

Illawarra Institute TAFE Campuses

Bega Campus

Barrack Street
(PO Box 689)
BEGA NSW 2550
Phone: 02 64929700
Fax: 02 64923304

Cooma Campus

66 Commissioner Street
(PO Box 777)
Phone: 02 64520799
Fax: 02 64520755

Dapto Campus

Princes Highway
(PO Box 183)
DAPTO NSW 2530
Phone: 02 42218900
Fax: 02 42218907

Goulburn Campus

Cnr View & Verner Streets
(PO Box 240)
GOULBURN NSW 2580
Phone: 02 48231800
Fax: 02 48218706

Moruya Campus

2857 Princes Highway
(PO Box 88)
MORUYA NSW 2537
Phone: 02 44741800
Fax: 02 44741888

Moss Vale Campus

Kirkham Street
(PO Box 212)
MOSS VALE NSW 2577
Phone: 02 48680111
Fax: 02 48682537

Nowra Campus

First Floor, Block A
60 Belinda Street
BOMADERRY NSW 2541
Phone: 02 44219888
Fax: 02 44219804

Queanbeyan Campus

Cnr Buttle & McQuoid Streets
(PO Box 436)
QUEANBEYAN NSW 2620
Phone: 02 62991377
Fax: 02 62991738

Shellharbour Campus

Lake Entrance Road
(PO Box 78 Shellharbour 2529)
WARILLA NSW 2529
Phone: 02 42952200
Fax: 02 42952272

Ulladulla Campus

Green Street
ULLADULLA
(PO Box 131)
MILTON 2538
Phone: 02 44553866
Fax: 02 44554945

Wollongong North Campus

Foleys Road
NORTH WOLLONGONG NSW 2550
Phone: 02 42290400
Fax: 02 42290626

Wollongong West Campus

Gladstone Avenue
WEST WOLLONGONG NSW 2500
Phone: 02 42222800
Fax: 02 42222881

Yallah Campus

Marshall Mount Road
(PO Box 381)
YALLAH NSW 2530
Phone: 02 42613744
Fax: 02 42618259

Yass Campus

51 Church Street
(PO Box 368)
YASS NSW 2582
Phone: 02 62261556
Fax: 02 62262156

Members of NSW Parliament

Member for Bega

Mr Andrew J Constance MP
Suite 4
Cnr Carp and Church Streets
BEGA NSW 2550
Ph: 6492 2056
Fax: 6492 3578

Member for Burrinjuck

Ms Katrina A Hodgkinson MP
133 Conur Street
YASS NSW 2582
Ph: 6226 3311
Fax: 6226 3345

Member for Goulburn

Ms Pru J Goward MP
288 Bong Bong Street
BOWRAL NSW 2576
Ph: 4861 3623
Fax: 4861 3546

Member for Heathcote

Mr Paul E McLeay MP
17-23 Station Street
PO Box 346
ENGADINE NSW 2233
Ph: 9548 0144
Fax: 9548 5639

Member for Keira

The Hon David A Campbell MP
Minister for Police and
Minister for the Illawarra
247 Princes Highway
CORRIMAL NSW 2518
Ph: 4285 1588
Fax: 4285 1858

Member for Kiama

Mr Matthew J Brown MP
125 Terralong Street
KIAMA NSW 2533
Ph: 4232 1082
Fax: 4232 3577

Member for Monaro

Mr Steve J R Whan MP
30 Morisset Street
QUEANBEYAN NSW 2620
Ph: 6299 4899
Fax: 67979998

Member for Shellharbour

Ms Lylea A McMahon MP
60 Princes Highway
DAPTO NSW 2530
Ph: 4261 7171
Fax: 4261 8433

Member for South Coast

Ms Shelley E Hancock MP
Ground Floor
38 Berry Street
NOWRA NSW 2541
Ph: 4421 0222
Fax: 4422 1180

Member for Wollongong

Ms Noreen Hay MP
Suite 2, 111 Crown Street
WOLLONGONG NSW 2500
Ph: 4226 5700
Fax: 4226 9963

Members of Federal Parliament

Member for Cunningham

Ms Sharon Bird, MP
PO Box 387
WOLLONGONG NSW 2520
Phone: 02 42283666
Fax: 02 42283677

Member for Eden/Monaro

The Hon Dr Mike Kelly, MP
PO Box 214
QUEANBEYAN NSW
Phone: 02 6284 2211
Fax: 02 6284 2250

Member for Gilmore

Ms Joanna Gash, MP
PO Box 1009
NOWRA NSW 2541
Phone: 02 44231782
Fax: 02 44231785

Member for Hume

Mr Alby Schultz, MP
PO Box 700
GOULBURN NSW 2580
Phone: 02 4822 2277
Fax: 02 48221029

Member for Throsby

Ms Jennie George MP
Unit 2-1 Bong Bong Road
DAPTO NSW 2530
Phone: 02 42626122
Fax: 02 42626155

Senator for NSW

Ms Concetta Fierravanti-Wells
Level 1, 90 Crown Street
WOLLONGONG NSW 2500
Phone: 4226 1700
Fax: 4226 1733

School Term Dates

2009

Start

Term 1 Tuesday 27 January 2009
Term 2 Tuesday 28 April 2009
Term 3 Monday 27 July 2009
Term 4 Monday 19 October 2009

Finish

Thursday 9 April 2009
Friday 10 July 2009
Friday 2 October 2009
Friday 18 December 2009

2010

Start

Term 1 Wednesday 27 January 2010
Term 2 Monday 19 April 2010
Term 3 Monday 19 July 2010
Term 4 Monday 11 October 2010

Finish

Thursday 1 April 2010
Friday 2 July 2010
Friday 24 September 2010
Friday 17 December 2009

Environmental Education Centres

Bournda Environmental Education Centre
Bournda National Park
KALARU NSW 2550
Principal: Mr Doug Reckord
P: 6494 5009
F: 6494 5011

Illawarra Environmental Education Centre
Killalea State Park, Buckleys Road
DUNMORE NSW 2529
PO Box A124
SHELLHARBOUR NSW 2529
Principal: Mr Stuart DeLandre
P: 4237 6100
F: 4237 6122

Schools for Specific Purposes

Budawang School
Camden & Narrawallee Streets
(PO Box 734)
ULLADULLA NSW 2539
P: 4455 1491

Para Meadows School
56 Porter Street
NORTH WOLLONGONG NSW 2500
P: 4229 1922

Havenlee School
75 Judith Drive
(PO Box 3082)
NORTH NOWRA NSW 2541
P: 4421 3777

Peterborough School
William Avenue
(PO Box 332)
WARILLA NSW 2528
P: 4297 1611

Highlands School
Bong Bong Road
(PO Box 64)
MITTAGONG NSW 2575
P: 4872 3088

Tangara School
Bong Bong Road
(PO Box 726)
MITTAGONG NSW 2575
P: 4871 1636

Illawarra Hospital School
Crown Street West
WOLLONGONG NSW 2500
P: 4222 5218

The Crescent School
Fitzroy Street
GOULBURN NSW 2580
P: 4821 3680

Adaminaby Public School 1007

Principal: Mr Mark Wyatt
 Cosgrove St
 ADAMINABY NSW 2630
 Phone: 6454 2265
 Fax: 6454 2552
 SEG: Sapphire Coast/Monaro
 State Electorate: Monaro
 Federal Electorate: Eden-Monaro
 Classification: Primary Class 5
 Email: adaminaby-p.school@det.nsw.edu.au

Albion Park Public School 1015

Principal: Mr Jim Cooper
 Tongarra & Hamilton Rds
 ALBION PARK NSW 2527
 Phone: 4256 1244
 Fax: 4256 4160
 SEG: Shellharbour
 State Electorate: Kiama
 Federal Electorate: Throsby
 Classification: Primary Class 2
 Email: albionpk-p.school@det.nsw.edu.au

Ando Public School 1035

Principal: Mrs Jo Tozer
 Monaro Hwy
 ANDO NSW 2631
 Phone: 6458 6634
 Fax: 6458 6664
 SEG: Sapphire Coast/Monaro
 State Electorate: Monaro
 Federal Electorate: Eden-Monaro
 Classification: Primary Class 6
 Email: ando-p.school@det.nsw.edu.au

Avoca Public School 1081

Principal: Ms Christine Campbell-Jones (Rel)
 Sheepwash Rd
 AVOCA VIA MOSS VALE NSW 2577
 Phone: 4887 7224
 Fax: 4887 7380
 SEG: Goulburn/Highlands
 State Electorate: Kiama
 Federal Electorate: Gilmore
 Classification: Primary Class 5
 Email: avoca-p.school@det.nsw.edu.au

Balgownie Public School 1106

Principal: Ms Kate Schmich
 Balgownie Rd
 BALGOWNIE NSW 2519
 Phone: 4284 4245
 Fax: 4284 3462
 SEG: Wollongong Nth
 State Electorate: Keira
 Federal Electorate: Cunningham
 Classification: Primary Class 4
 Email: balgownie-p.school@det.nsw.edu.au

Albion Park High School 8586

Principal: Mr Ken Griffiths
 Church St (PO Box 345)
 ALBION PARK NSW 2527
 Phone: 4257 1744
 Fax: 4257 1826
 SEG: Shellharbour
 State Electorate: Kiama
 Federal Electorate: Throsby
 Classification: Secondary Class 8
 Email: albionpk-h.school@det.nsw.edu.au

Albion Park Rail Public School 4121

Principal: Mr Paul Murray
 Tongarra Rd (PO Box 1)
 ALBION PARK NSW 2527
 Phone: 4256 1287
 Fax: 4257 1912
 SEG: Shellharbour
 State Electorate: Kiama
 Federal Electorate: Throsby
 Classification: Primary Class 2
 Email: albionpkr-p.school@det.nsw.edu.au

Austinmer Public School 1076

Principal: Mr Paul Petersen
 90 Lawrence Hargrave Drive
 AUSTINMER NSW 2515
 Phone: 4267 1311
 Fax: 4267 1018
 SEG: Wollongong Nth
 State Electorate: Heathcote
 Federal Electorate: Cunningham
 Classification: Primary Class 4
 Email: austinmer-p.school@det.nsw.edu.au

Balarang Public School 4291

Principal: Mr Peter Bowden
 Government Rd
 OAK FLATS NSW 2529
 Phone: 4256 1846
 Fax: 4257 1441
 SEG: Shellharbour
 State Electorate: Shellharbour
 Federal Electorate: Throsby
 Classification: Primary Class 3
 Email: balarang-p.school@det.nsw.edu.au

Barrack Heights Public School 4501

Principal: Mr Robert Cusack
 Hunter St
 BARRACK HEIGHTS NSW 2528
 Phone: 4296 4222
 Fax: 4297 2818
 SEG: Shellharbour
 State Electorate: Shellharbour
 Federal Electorate: Throsby
 Classification: Primary Class 3
 Email: barrackht-p.school@det.nsw.edu.au

Batemans Bay High School 8581

Principal: Mr Neil Simpson
 Beach Rd
 BATEHAVEN NSW 2536
 Phone: 4472 7233
 Fax: 4472 8173
 SEG: Batemans Bay
 State Electorate: Bega
 Federal Electorate: Gilmore
 Classification: Secondary Class 9
 Email: batemansba-h.school@det.nsw.edu.au

Batemans Bay Public School 1149

Principal: Mr Tom Purcell
 Mundarra Way
 SURFSIDE NSW 2536
 Phone: 4472 4059
 Fax: 4472 8457
 SEG: Batemans Bay
 State Electorate: Bega
 Federal Electorate: Gilmore
 Classification: Primary Class 3
 Email: batemansba-p.school@det.nsw.edu.au

Bega High School 8165

Principal: Mr Paul Morris (Rel)
 Upper & Eden Sts
 BEGA NSW 2550
 Phone: 6492 1800
 Fax: 6492 3996
 SEG: Sapphire Coast/Monaro
 State Electorate: Bega
 Federal Electorate: Eden-Monaro
 Classification: Secondary Class 8
 Email: bega-h.school@det.nsw.edu.au

Bega Public School 1168

Principal: Mr Troy Mott
 27 Auckland St
 BEGA NSW 2550
 Phone: 6492 1280
 Fax: 6492 3965
 SEG: Sapphire Coast/Monaro
 State Electorate: Bega
 Federal Electorate: Eden-Monaro
 Classification: Primary Class 4
 Email: bega-p.school@det.nsw.edu.au

Bega West Public School 4137

Principal: Ms Alana Lockerbie
 Rawlinson & Ravenswood Sts PO Box 656
 BEGA NSW 2550
 Phone: 6492 1499
 Fax: 6492 1989
 SEG: Sapphire Coast/Monaro
 State Electorate: Bega
 Federal Electorate: Eden-Monaro
 Classification: Primary Class 4
 Email: begawest-p.school@det.nsw.edu.au

Bellambi Public School 3979

Principal: Ms Aloma Stewart
 Owen Park Rd
 BELLAMBI NSW 2518
 Phone: 4284 8666
 Fax: 4285 2723
 SEG: Wollongong Nth
 State Electorate: Keira
 Federal Electorate: Cunningham
 Classification: Primary Class 3
 Email: bellambi-p.school@det.nsw.edu.au

Bemboka Public School 1189

Principal: Mr Bryan O'Meara
 Kameruka St
 BEMBOKA NSW 2550
 Phone: 6493 0229
 Fax: 6493 0452
 SEG: Sapphire Coast/Monaro
 State Electorate: Monaro
 Federal Electorate: Eden-Monaro
 Classification: Primary Class 5
 Email: bemboka-p.school@det.nsw.edu.au

Berinba Public School 4450

Principal: Mr Ray Claydon
 Church St (PO Box 95)
 YASS NSW 2582
 Phone: 6226 2110
 Fax: 6226 3194
 SEG: Queanbeyan
 State Electorate: Burrinjuck
 Federal Electorate: Hume
 Classification: Primary Class 4
 Email: berinba-p.school@det.nsw.edu.au

Berkeley Public School 1202

Principal: Mrs Jan Hagan
 George St
 BERKELEY NSW 2506
 Phone: 4271 1171
 Fax: 4271 4304
 SEG: Wollongong
 State Electorate: Wollongong
 Federal Electorate: Throsby
 Classification: Primary Class 3
 Email: berkeley-p.school@det.nsw.edu.au

Berkeley South Public School 4295

Principal: Ms Belinda O'Hara (Rel)
 Essex St
 BERKELEY NSW 2506
 Phone: 4271 1659
 Fax: 4271 2844
 SEG: Wollongong
 State Electorate: Wollongong
 Federal Electorate: Throsby
 Classification: Primary Class 5
 Email: berkeleys-p.school@det.nsw.edu.au

Berkeley West Public School 4180

Principal: Mr Andrew Attard
 Nolan St
 BERKELEY NSW 2506
 Phone: 4271 1478
 Fax: 4271 5334
 SEG: Wollongong
 State Electorate: Wollongong
 Federal Electorate: Throsby
 Classification: Primary Class 4
 Email: berkeleyw-p.school@det.nsw.edu.au

Bermagui Public School 1204

Principal: Mr Neil Rutherford
 2-4 George St
 BERMAGUI NSW 2546
 Phone: 6493 4271
 Fax: 6493 4425
 SEG: Batemans Bay
 State Electorate: Bega
 Federal Electorate: Eden-Monaro
 Classification: Primary Class 4
 Email: bermagui-p.school@det.nsw.edu.au

Berridale Public School 1206

Principal: Mr Ian McCluggage
 Oliver St
 BERRIDALE NSW 2628
 Phone: 6456 3228
 Fax: 6456 3429
 SEG: Sapphire Coast/Monaro
 State Electorate: Monaro
 Federal Electorate: Eden-Monaro
 Classification: Primary Class 5
 Email: berridale-p.school@det.nsw.edu.au

Berrima Public School 1209

Principal: Mr Tim Ryan
 Oxley St
 BERRIMA NSW 2577
 Phone: 4877 1262
 Fax: 4877 1041
 SEG: Goulburn/Highlands
 State Electorate: Goulburn
 Federal Electorate: Hume
 Classification: Primary Class 5
 Email: berrima-p.school@det.nsw.edu.au

Berry Public School 1211

Principal: Mr Wayne Courtney
 1 Clarence St/ PO Box 222
 BERRY NSW 2535
 Phone: 4464 1158
 Fax: 4464 1664
 SEG: Shoalhaven
 State Electorate: Kiama
 Federal Electorate: Gilmore
 Classification: Primary Class 3
 Email: berry-p.school@det.nsw.edu.au

Bibbenluke Public School 1219

Principal: Ms Sally Beard
 Burnima St
 BIBBENLUKE NSW 2632
 Phone: 6458 5230
 Fax: 6458 5253
 SEG: Sapphire Coast/Monaro
 State Electorate: Monaro
 Federal Electorate: Eden-Monaro
 Classification: Primary Class 6
 Email: bibbenluke-p.school@det.nsw.edu.au

Bigga Public School 1223

Principal: Ms Elizabeth Duncan (Rel)
 Blackman St
 BIGGA NSW 2583
 Phone: 4835 2236
 Fax: 4835 2246
 SEG: Queanbeyan
 State Electorate: Burrinjuck
 Federal Electorate: Hume
 Classification: Primary Class 6
 Email: bigga-p.school@det.nsw.edu.au

Binda Public School 1231

Principal: Ms Jeanette Parker
 Queen St
 BINDA NSW 2583
 Phone: 4835 6052
 Fax: 4835 6092
 SEG: Queanbeyan
 State Electorate: Burrinjuck
 Federal Electorate: Hume
 Classification: Primary Class 6
 Email: binda-p.school@det.nsw.edu.au

Bodalla Public School 1272

Principal: Mr Geoff Broadfoot
 Potato Point Rd
 BODALLA NSW 2545
 Phone: 4473 5257
 Fax: 4473 5254
 SEG: Batemans Bay
 State Electorate: Bega
 Federal Electorate: Eden-Monaro
 Classification: Primary Class 4
 Email: bodalla-p.school@det.nsw.edu.au

Bomaderry High School 8448

Principal: Ms Jill Appleton
 Cambewarra Rd
 BOMADERRY NSW 2541
 Phone: 4421 0699
 Fax: 4423 2732
 SEG: Shoalhaven
 State Electorate: Kiama
 Federal Electorate: Gilmore
 Classification: Secondary Class 8
 Email: bomaderry-h.school@det.nsw.edu.au

Bomaderry Public School 1287

Principal: Mr Garry Mansfield
 Cambewarra Rd
 BOMADERRY NSW 2541
 Phone: 4421 6577
 Fax: 4423 1847
 SEG: Shoalhaven
 State Electorate: Kiama
 Federal Electorate: Gilmore
 Classification: Primary Class 3
 Email: bomaderry-p.school@det.nsw.edu.au

Bombala Public School 1288

Principal: Mr Adam Zanco
 8 Bright St (PO Box 40)
 BOMBALA NSW 2632
 Phone: 6458 3423
 Fax: 6458 3376
 SEG: Sapphire Coast/Monaro
 State Electorate: Monaro
 Federal Electorate: Eden-Monaro
 Classification: Primary Class 5
 Email: bombala-p.school@det.nsw.edu.au

Bournda Environmental Education Centre 5679

Principal: Mr Doug Reckord
 Bournda National Park
 KALARU NSW 2550
 Phone: 6494 5009
 Fax: 6494 5011
 SEG: Sapphire Coast/Monaro
 State Electorate: Bega
 Federal Electorate: Eden-Monaro
 Classification: EEC Class 2
 Email: bournda-e.school@det.nsw.edu.au

Bowral High School 8104

Principal: Ms Dianne Hennessy
 Park & Aitken Rds (PO Box 1147)
 BOWRAL NSW 2576
 Phone: 4861 2255
 Fax: 4861 2184
 SEG: Goulburn/Highlands
 State Electorate: Goulburn
 Federal Electorate: Hume
 Classification: Secondary Class 8
 Email: bowral-h.school@det.nsw.edu.au

Bradfordville Public School 4406

Principal: Mr Eric Patatoukos
 Hampden St
 BRADFORDVILLE NSW 2580
 Phone: 4821 4936
 Fax: 4821 9899
 SEG: Goulburn/Highlands
 State Electorate: Goulburn
 Federal Electorate: Hume
 Classification: Primary Class 4
 Email: bradfordvi-p.school@det.nsw.edu.au

Bombala High School 8486

Principal: Mr Phil Steel
 Wellington St
 BOMBALA NSW 2632
 Phone: 6458 3358
 Fax: 6458 3866
 SEG: Sapphire Coast/Monaro
 State Electorate: Monaro
 Federal Electorate: Eden-Monaro
 Classification: Secondary Class 9
 Email: bombala-h.school@det.nsw.edu.au

Boorowa Central School 1313

Principal: Ms Jennifer Green (Rel)
 Pudman St
 BOOROWA NSW 2586
 Phone: 6385 3009
 Fax: 6385 3409
 SEG: Queanbeyan
 State Electorate: Burrinjuck
 Federal Electorate: Hume
 Classification: Central/Combined Class 3
 Email: boorowa-c.school@det.nsw.edu.au

Bowning Public School 1334

Principal: Ms Clare Pritchard
 Hume Hwy
 BOWNING NSW 2582
 Phone: 6227 6093
 Fax: 6227 6121
 SEG: Queanbeyan
 State Electorate: Burrinjuck
 Federal Electorate: Hume
 Classification: Primary Class 5
 Email: bowning-p.school@det.nsw.edu.au

Bowral Public School 1335

Principal: Mr John Morris
 Bendooley St (PO Box 865)
 BOWRAL NSW 2576
 Phone: 4861 1086
 Fax: 4862 1004
 SEG: Goulburn/Highlands
 State Electorate: Goulburn
 Federal Electorate: Hume
 Classification: Primary Class 2
 Email: bowral-p.school@det.nsw.edu.au

Braidwood Central School 1340

Principal: Mr Rod McClure
 Wilson St
 BRAIDWOOD NSW 2622
 Phone: 4842 2249
 Fax: 4842 2501
 SEG: Batemans Bay
 State Electorate: Monaro
 Federal Electorate: Eden-Monaro
 Classification: Central/Combined Class 2
 Email: braidwood-c.school@det.nsw.edu.au

Breadalbane Public School 1345

Principal: Mr Bede Darcey
 Collector Rd
 BREADALBANE NSW 2581
 Phone: 4844 2243
 Fax: 4844 2225
 SEG: Queanbeyan
 State Electorate: Burrinjuck
 Federal Electorate: Hume
 Classification: Primary Class 6
 Email: breadalban-p.school@det.nsw.edu.au

Broulee Public School 4612

Principal: Mrs Lynne Takacs (Rel)
 Cambridge Cresc
 BROULEE NSW 2537
 Phone: 4471 6120
 Fax: 4471 6145
 SEG: Batemans Bay
 State Electorate: Bega
 Federal Electorate: Eden-Monaro
 Classification: Primary Class 3
 Email: broulee-p.school@det.nsw.edu.au

Bulli High School 8878

Principal: Mr Bruce Sander
 Ursula Rd
 BULLI NSW 2516
 Phone: 4284 8266
 Fax: 4285 2232
 SEG: Wollongong Nth
 State Electorate: Heathcote
 Federal Electorate: Cunningham
 Classification: Secondary Class 8
 Email: bulli-h.school@det.nsw.edu.au

Bundanoon Public School 1414

Principal: Mrs Robyn Versluis
 Church St/PO Box 66
 BUNDANOON NSW 2578
 Phone: 4883 6192
 Fax: 4883 6799
 SEG: Goulburn/Highlands
 State Electorate: Goulburn
 Federal Electorate: Hume
 Classification: Primary Class 4
 Email: bundanoon-p.school@det.nsw.edu.au

Burrawang Public School 1445

Principal: Ms Lorna DeCean
 Church St
 BURRAWANG NSW 2577
 Phone: 4886 4261
 Fax: 4886 4248
 SEG: Goulburn/Highlands
 State Electorate: Kiama
 Federal Electorate: Gilmore
 Classification: Primary Class 5
 Email: burrawang-p.school@det.nsw.edu.au

Bredbo Public School 1347

Principal: Ms Meg Couvee
 Monaro Hwy (PO Box 865)
 BREDBO NSW 2626
 Phone: 6454 4107
 Fax: 6454 4007
 SEG: Sapphire Coast/Monaro
 State Electorate: Monaro
 Federal Electorate: Eden-Monaro
 Classification: Primary Class 5
 Email: bredbo-p.school@det.nsw.edu.au

Budawang School 5749

Principal: Ms Sheryl Bruffey
 Camden & Narrawallee Sts (PO Box 734)
 ULLADULLA NSW 2539
 Phone: 4455 1491
 Fax: 4455 4981
 SEG: Batemans Bay
 State Electorate: South Coast
 Federal Electorate: Gilmore
 Classification: SSP Class 5
 Email: budawang-s.school@det.nsw.edu.au

Bulli Public School 1411

Principal: Ms Sue Elliott-Newth
 Haig Rd
 BULLI NSW 2516
 Phone: 4267 1723
 Fax: 4268 1503
 SEG: Wollongong Nth
 State Electorate: Heathcote
 Federal Electorate: Cunningham
 Classification: Primary Class 4
 Email: bulli-p.school@det.nsw.edu.au

Bungendore Public School 1421

Principal: Garry Atkinson
 Gibraltar St
 BUNGENDORE NSW 2621
 Phone: 6238 1317
 Fax: 6238 1718
 SEG: Queanbeyan
 State Electorate: Monaro
 Federal Electorate: Eden-Monaro
 Classification: Primary Class 3
 Email: bungendore-p.school@det.nsw.edu.au

Callala Public School 4626

Principal: Mr Craig Walker
 Emmett St
 CALLALA BAY NSW 2540
 Phone: 4446 4352
 Fax: 4446 4357
 SEG: Shoalhaven
 State Electorate: South Coast
 Federal Electorate: Gilmore
 Classification: Primary Class 3
 Email: callala-p.school@det.nsw.edu.au

Cambewarra Public School 1481

Principal: Mrs Susan Hilliar
 Kalinga St
 CAMBEWARRA NSW 2540
 Phone: 4446 0038
 Fax: 4446 0515
 SEG: Shoalhaven
 State Electorate: Kiama
 Federal Electorate: Gilmore
 Classification: Primary Class 4
 Email: cambewarra-p.school@det.nsw.edu.au

Captains Flat Public School 1502

Principal: Mr Peter Cox
 Montgomery St
 CAPTAINS FLATS NSW 2623
 Phone: 6236 6253
 Fax: 6236 6390
 SEG: Queanbeyan
 State Electorate: Monaro
 Federal Electorate: Eden-Monaro
 Classification: Primary Class 5
 Email: captainsfl-p.school@det.nsw.edu.au

Cobargo Public School 1579

Principal: Mr Robert Whymark
 Wandella Rd (PO Box 63)
 COBARGO NSW 2550
 Phone: 6493 6482
 Fax: 6493 6410
 SEG: Sapphire Coast/Monaro
 State Electorate: Bega
 Federal Electorate: Eden-Monaro
 Classification: Primary Class 5
 Email: cobargo-p.school@det.nsw.edu.au

Collector Public School 1590

Principal: Ms Melissa Dunbar-Reid
 Lorn St
 COLLECTOR NSW 2581
 Phone: 4848 0024
 Fax: 4848 0102
 SEG: Queanbeyan
 State Electorate: Burrinjuck
 Federal Electorate: Hume
 Classification: Primary Class 6
 Email: collector-p.school@det.nsw.edu.au

Coniston Public School 1612

Principal: Mr Stephen Mayhew
 123 Auburn St
 CONISTON NSW 2500
 Phone: 4229 1117
 Fax: 4226 5094
 SEG: Wollongong Nth
 State Electorate: Wollongong
 Federal Electorate: Cunningham
 Classification: Primary Class 4
 Email: coniston-p.school@det.nsw.edu.au

Candelo Public School 1490

Principal: Mrs Suezanne Bourke
 William St
 CANDELO NSW 2550
 Phone: 6493 2236
 Fax: 6493 2035
 SEG: Sapphire Coast/Monaro
 State Electorate: Bega
 Federal Electorate: Eden-Monaro
 Classification: Primary Class 5
 Email: candelo-p.school@det.nsw.edu.au

Central Tilba Public School 3214

Principal: Ms Therese Aston (Rel)
 89 Corkhill Drive
 CENTRAL TILBA NSW 2546
 Phone: 4473 7210
 Fax: 4473 7469
 SEG: Batemans Bay
 State Electorate: Bega
 Federal Electorate: Eden-Monaro
 Classification: Primary Class 5
 Email: centrtilba-p.school@det.nsw.edu.au

Coledale Public School 1587

Principal: Mrs Susan Bradley
 Lawrence Hargrave Drive
 COLEDALE NSW 2515
 Phone: 4267 1885
 Fax: 4268 1438
 SEG: Wollongong Nth
 State Electorate: Heathcote
 Federal Electorate: Cunningham
 Classification: Primary Class 5
 Email: coledale-p.school@det.nsw.edu.au

Colo Vale Public School 1085

Principal: Mrs Jenny Quist
 Wattle St
 COLO VALE NSW 2575
 Phone: 4889 4250
 Fax: 4889 4285
 SEG: Goulburn/Highlands
 State Electorate: Goulburn
 Federal Electorate: Hume
 Classification: Primary Class 4
 Email: colovale-p.school@det.nsw.edu.au

Cooma North Public School 3890

Principal: Mr Les Percival
 Baroona Ave
 COOMA NORTH NSW 2630
 Phone: 6452 1742
 Fax: 6452 4267
 SEG: Sapphire Coast/Monaro
 State Electorate: Monaro
 Federal Electorate: Eden-Monaro
 Classification: Primary Class 3
 Email: coomanth-p.school@det.nsw.edu.au

Cooma Public School 1628

Principal: Ms Margaret Downey
 Commissioner St
 COOMA NSW 2630
 Phone: 6452 1933
 Fax: 6452 2980
 SEG: Sapphire Coast/Monaro
 State Electorate: Monaro
 Federal Electorate: Eden-Monaro
 Classification: Primary Class 4
 Email: cooma-p.school@det.nsw.edu.au

Corrimal High School 8191

Principal: Mr Ron Heffernan
 Murray Rd
 CORRIMAL NSW 2518
 Phone: 4285 1199
 Fax: 4284 0342
 SEG: Wollongong Nth
 State Electorate: Keira
 Federal Electorate: Cunningham
 Classification: Secondary Class 9
 Email: corrimal-h.school@det.nsw.edu.au

Cringila Public School 4037

Principal: Mr David Lamb
 Sheffield St
 CRINGILA NSW 2502
 Phone: 4274 1768
 Fax: 4276 2841
 SEG: Wollongong
 State Electorate: Wollongong
 Federal Electorate: Throsby
 Classification: Primary Class 5
 Email: cringila-p.school@det.nsw.edu.au

Crookwell Public School 1684

Principal: Mr Greg Atfield
 Denison St
 CROOKWELL NSW 2583
 Phone: 4832 1213
 Fax: 4832 1353
 SEG: Queanbeyan
 State Electorate: Burrinjuck
 Federal Electorate: Hume
 Classification: Primary Class 5
 Email: crookwell-p.school@det.nsw.edu.au

Dalgety Public School 1722

Principal: Ms Natalie Condello (Rel)
 Cooma St
 DALGETY NSW 2630
 Phone: 6456 5031
 Fax: 6456 5141
 SEG: Sapphire Coast/Monaro
 State Electorate: Monaro
 Federal Electorate: Eden-Monaro
 Classification: Primary Class 5
 Email: dalgety-p.school@det.nsw.edu.au

Corrimal East Public School 3877

Principal: Mr David Schofield
 Duff Pde
 CORRIMAL NSW 2518
 Phone: 4284 4582
 Fax: 4285 2715
 SEG: Wollongong Nth
 State Electorate: Keira
 Federal Electorate: Cunningham
 Classification: Primary Class 3
 Email: corrimal-e.school@det.nsw.edu.au

Corrimal Public School 1661

Principal: Ms Donna Shevlin
 Princes Hwy
 CORRIMAL NSW 2518
 Phone: 4284 4231
 Fax: 4284 1392
 SEG: Wollongong Nth
 State Electorate: Keira
 Federal Electorate: Cunningham
 Classification: Primary Class 4
 Email: corrimal-p.school@det.nsw.edu.au

Crookwell High School 8452

Principal: Mr Ray Jones
 Crown St
 CROOKWELL NSW 2583
 Phone: 4832 1421
 Fax: 4832 1966
 SEG: Queanbeyan
 State Electorate: Burrinjuck
 Federal Electorate: Hume
 Classification: Secondary Class 9
 Email: crookwell-h.school@det.nsw.edu.au

Culburra Public School 4485

Principal: Mr Ron Letters
 Carlton Cres
 CULBURRA BEACH NSW 2540
 Phone: 4447 2010
 Fax: 4447 3651
 SEG: Shoalhaven
 State Electorate: South Coast
 Federal Electorate: Gilmore
 Classification: Primary Class 4
 Email: culburra-p.school@det.nsw.edu.au

Dalton Public School 1723

Principal: Ms Janet O'Dea
 Jobson St
 DALTON NSW 2581
 Phone: 4845 6210
 Fax: 4845 6203
 SEG: Queanbeyan
 State Electorate: Burrinjuck
 Federal Electorate: Hume
 Classification: Primary Class 5
 Email: dalton-p.school@det.nsw.edu.au

Dapto High School 8204

Principal: Mr Andrew FitzSimons
 Cleveland Rd/PO Box 866
 DAPTO NSW 2530
 Phone: 4261 1416
 Fax: 4261 2584
 SEG: Shellharbour
 State Electorate: Shellharbour
 Federal Electorate: Throsby
 Classification: Secondary Class 8
 Email: dapto-h.school@det.nsw.edu.au

Delegate Public School 1745

Principal: Mrs Carol Sellers
 Campbell St
 DELEGATE NSW 2633
 Phone: 6458 8183
 Fax: 6458 8260
 SEG: Sapphire Coast/Monaro
 State Electorate: Monaro
 Federal Electorate: Eden-Monaro
 Classification: Primary Class 5
 Email: delegate-p.school@det.nsw.edu.au

Eden Public School 1816

Principal: Mr John Davidson
 Imlay St
 EDEN NSW 2551
 Phone: 6496 1169
 Fax: 6496 1383
 SEG: Sapphire Coast/Monaro
 State Electorate: Bega
 Federal Electorate: Eden-Monaro
 Classification: Primary Class 4
 Email: eden-p.school@det.nsw.edu.au

Fairy Meadow Demonstration School 1898

Principal: Mr Phil Seymour
 Princes Hwy/PO Box 149
 FAIRY MEADOW NSW 2519
 Phone: 4284 2009
 Fax: 4285 1753
 SEG: Wollongong Nth
 State Electorate: Keira
 Federal Electorate: Cunningham
 Classification: Primary Class 2
 Email: fairymeado-p.school@det.nsw.edu.au

Farmborough Road Public School 3976

Principal: Ms Dale Green
 Farmborough Rd (PO Box 229)
 UNANDERRA NSW 2526
 Phone: 4271 1133
 Fax: 4271 5335
 SEG: Wollongong
 State Electorate: Wollongong
 Federal Electorate: Throsby
 Classification: Primary Class 4
 Email: farmborord-p.school@det.nsw.edu.au

Dapto Public School 1727

Principal: Mr Wayne Ash
 Sierra Drive
 HORSLEY NSW 2530
 Phone: 4261 2247
 Fax: 4262 2038
 SEG: Shellharbour
 State Electorate: Shellharbour
 Federal Electorate: Throsby
 Classification: Primary Class 2
 Email: dapto-p.school@det.nsw.edu.au

Eden Marine High School 8487

Principal: Ms Linda Thursdton (Rel)
 Barclay St PO Box 188
 EDEN NSW 2551
 Phone: 6496 1541
 Fax: 6496 2144
 SEG: Sapphire Coast/Monaro
 State Electorate: Bega
 Federal Electorate: Eden-Monaro
 Classification: Secondary Class 9
 Email: edenmarine-h.school@det.nsw.edu.au

Exeter Public School 1891

Principal: Mr Grant Schaefer
 School Rd
 EXETER NSW 2579
 Phone: 4883 4280
 Fax: 4883 4085
 SEG: Goulburn/Highlands
 State Electorate: Goulburn
 Federal Electorate: Gilmore
 Classification: Primary Class 5
 Email: exeter-p.school@det.nsw.edu.au

Falls Creek Public School 1901

Principal: Mr Robert Currie
 26 Vidler St
 FALLS CREEK NSW 2540
 Phone: 4447 8243
 Fax: 4447 8023
 SEG: Shoalhaven
 State Electorate: South Coast
 Federal Electorate: Gilmore
 Classification: Primary Class 5
 Email: fallscreek-p.school@det.nsw.edu.au

Figtree Heights Public School 4462

Principal: Mr Wayne Thomas
 St Georges Ave
 FIGTREE NSW 2525
 Phone: 4228 6770
 Fax: 4226 5061
 SEG: Wollongong
 State Electorate: Keira
 Federal Electorate: Cunningham
 Classification: Primary Class 4
 Email: figtreehts-p.school@det.nsw.edu.au

Figtree High School 8449

Principal: Mr Stephen Bouvet
 Gibsons Rd
 FIGTREE NSW 2525
 Phone: 4271 2787
 Fax: 4271 6626
 SEG: Wollongong
 State Electorate: Keira
 Federal Electorate: Cunningham
 Classification: Secondary Class 9
 Email: figtree-h.school@det.nsw.edu.au

Five Mile Tree Public School 1922

School in Recess

Gerringong Public School 1971

Principal: Mrs Joy Fullagar
 12 Archibald Rd (PO Box 5)
 GERRINGONG NSW 2534
 Phone: 4234 1376
 Fax: 4234 2749
 SEG: Shoalhaven
 State Electorate: Kiama
 Federal Electorate: Gilmore
 Classification: Primary Class 3
 Email: gerringong-p.school@det.nsw.edu.au

Goulburn East Public School 2054

Principal: Ms Sharon Williams (Acting)
 Eleanor St
 GOULBURN NSW 2580
 Phone: 4821 4007
 Fax: 4822 1381
 SEG: Goulburn/Highlands
 State Electorate: Goulburn
 Federal Electorate: Hume
 Classification: Primary Class 5
 Email: goulburne-p.school@det.nsw.edu.au

Goulburn North Public School 2055

Principal: Mr Michael Hooker
 Union St
 GOULBURN NORTH NSW 2580
 Phone: 4821 3838
 Fax: 4822 1357
 SEG: Goulburn/Highlands
 State Electorate: Goulburn
 Federal Electorate: Hume
 Classification: Primary Class 4
 Email: goulburnn-p.school@det.nsw.edu.au

Figtree Public School 3964

Principal: Mr Paul Brightwell
 9 Gibsons Rd
 FIGTREE NSW 2525
 Phone: 4271 6888
 Fax: 4271 6760
 SEG: Wollongong
 State Electorate: Keira
 Federal Electorate: Cunningham
 Classification: Primary Class 3
 Email: figtree-p.school@det.nsw.edu.au

Flinders Public School 4463

Principal: Ms Heather Argerakis (Rel)
 Adam Murray Way (PO Box A179, SHELLHARBOUR
 NSW 2529)
 FLINDERS NSW 2529
 Phone: 4295 7355
 Fax: 4295 7455
 SEG: Shellharbour
 State Electorate: Shellharbour
 Federal Electorate: Throsby
 Classification: Primary Class 2
 Email: flinders-p.school@det.nsw.edu.au

Glenquarry Public School 2015

Principal: Mr Grant Galbraith
 Tourist Rd
 GLENQUARRY NSW 2576
 Phone: 4887 1205
 Fax: 4887 1353
 SEG: Goulburn/Highlands
 State Electorate: Goulburn
 Federal Electorate: Hume
 Classification: Primary Class 5
 Email: glenquarry-p.school@det.nsw.edu.au

Goulburn High School 8116

Principal: Mr Peter Browne
 132 Goldsmith St
 GOULBURN NSW 2580
 Phone: 4821 4022
 Fax: 4822 1437
 SEG: Goulburn/Highlands
 State Electorate: Goulburn
 Federal Electorate: Hume
 Classification: Secondary Class 9
 Email: goulburn-h.school@det.nsw.edu.au

Goulburn Public School 2053

Principal: Ms Narelle Lloyd
 Bourke St
 GOULBURN NSW 2580
 Phone: 4821 2827
 Fax: 4822 1395
 SEG: Goulburn/Highlands
 State Electorate: Goulburn
 Federal Electorate: Hume
 Classification: Primary Class 5
 Email: goulburn-p.school@det.nsw.edu.au

Goulburn South Public School 2056

Principal: Mr Graham Johnson
 Addison St (PO Box 845)
 GOULBURN NSW 2580
 Phone: 4821 2759
 Fax: 4822 1435
 SEG: Goulburn/Highlands
 State Electorate: Goulburn
 Federal Electorate: Hume
 Classification: Primary Class 4
 Email: goulburns-p.school@det.nsw.edu.au

Greenwell Point Public School 3872

Principal: Ms Kate Murphy
 Greenwell Point Rd
 GREENWELL POINT NSW 2540
 Phone: 4447 1379
 Fax: 4447 1550
 SEG: Shoalhaven
 State Electorate: South Coast
 Federal Electorate: Gilmore
 Classification: Primary Class 5
 Email: greenwelpt-p.school@det.nsw.edu.au

Gunning Public School 2111

Principal: Ms Annette Broadbent
 Yass St
 GUNNING NSW 2581
 Phone: 4845 1129
 Fax: 4845 1236
 SEG: Queanbeyan
 State Electorate: Burrinjuck
 Federal Electorate: Hume
 Classification: Primary Class 5
 Email: gunning-p.school@det.nsw.edu.au

Havenlee School 5698

Principal: Mrs Julie Ashby
 75 Judith Drive (PO Box 3082)
 NORTH NOWRA NSW 2541
 Phone: 4421 3777
 Fax: 4423 2139
 SEG: Shoalhaven
 State Electorate: Kiama
 Federal Electorate: Gilmore
 Classification: SSP Class 4
 Email: havenlee-s.school@det.nsw.edu.au

Helensburgh Public School 2153

Principal: Mr Christopher Connor
 Lukin St
 HELENSBURGH NSW 2508
 Phone: 4294 1332
 Fax: 4294 3676
 SEG: Wollongong Nth
 State Electorate: Heathcote
 Federal Electorate: Cunningham
 Classification: Primary Class 2
 Email: helensburg-p.school@det.nsw.edu.au

Goulburn West Public School 3741

Principal: Mr Steve Harrison
 Combermere St PO Box 1321
 GOULBURN NSW 2580
 Phone: 4821 1781
 Fax: 4822 1460
 SEG: Goulburn/Highlands
 State Electorate: Goulburn
 Federal Electorate: Hume
 Classification: Primary Class 3
 Email: goulburnw-p.school@det.nsw.edu.au

Gundaroo Public School 2104

Principal: Ms Sue Kominek (Rel)
 Lot St
 GUNDAROO NSW 2620
 Phone: 6236 8115
 Fax: 6236 8181
 SEG: Queanbeyan
 State Electorate: Burrinjuck
 Federal Electorate: Hume
 Classification: Primary Class 5
 Email: gundaroo-p.school@det.nsw.edu.au

Gwynneville Public School 3826

Principal: Ms Patrica McGee-Payne (Rel)
 10 Acacia St
 GWYNNEVILLE NSW 2500
 Phone: 4229 5728
 Fax: 4226 5058
 SEG: Wollongong Nth
 State Electorate: Wollongong
 Federal Electorate: Cunningham
 Classification: Primary Class 4
 Email: gwynneville-p.school@det.nsw.edu.au

Hayes Park Public School 4399

Principal: Mr Graham Tink
 202 Kanahooka Rd
 DAPTO NSW 2530
 Phone: 4261 4222
 Fax: 4262 2043
 SEG: Shellharbour
 State Electorate: Illawarra
 Federal Electorate: Throsby
 Classification: Primary Class 2
 Email: hayespark-p.school@det.nsw.edu.au

Highlands School 5576

Principal: Mr Ross Bowey
 Bong Bong Rd (PO Box 64)
 MITTAGONG NSW 2575
 Phone: 4872 3088
 Fax: 4872 3800
 SEG: Goulburn/Highlands
 State Electorate: Goulburn
 Federal Electorate: Hume
 Classification: SSP Class 5
 Email: highlands-s.school@det.nsw.edu.au

Hill Top Public School 2166

Principal: Mr Brian Reakes
 Linda St
 HILL TOP NSW 2575
 Phone: 4889 8227
 Fax: 4889 8224
 SEG: Goulburn/Highlands
 State Electorate: Goulburn
 Federal Electorate: Hume
 Classification: Primary Class 4
 Email: hilltop-p.school@det.nsw.edu.au

Illaroo Road Public School 4246

Principal: Mr Bob Lowe (Rel)
 Illaroo Rd
 NOWRA NSW 2541
 Phone: 4421 0422
 Fax: 4423 2728
 SEG: Shoalhaven
 State Electorate: Kiama
 Federal Electorate: Gilmore
 Classification: Primary Class 2
 Email: illaroo-p.school@det.nsw.edu.au

Illawarra Hospital School 5551

Principal: Ms Kim Bell
 Crown St West
 WOLLONGONG NSW 2500
 Phone: 4222 5218
 Fax: 4226 5105
 SEG: Wollongong
 State Electorate: Wollongong
 Federal Electorate: Cunningham
 Classification: SSP Class 4
 Email: illawarhos-s.school@det.nsw.edu.au

Illawarra Sports High School 8205

Principal: Dr Peter Bailey
 Gura St
 BERKELEY NSW 2506
 Phone: 4271 1099
 Fax: 4271 3511
 SEG: Wollongong
 State Electorate: Wollongong
 Federal Electorate: Throsby
 Classification: Secondary Class 8
 Email: illawaspor-h.school@det.nsw.edu.au

Jerangle Public School 2225

Principal: Ms Sonja Thorvaldson (Rel)
 Braidwood-Cooma Rd
 JERANGLE NSW 2630
 Phone: 6454 3127
 Fax: 6454 3177
 SEG: Sapphire Coast/Monaro
 State Electorate: Monaro
 Federal Electorate: Eden-Monaro
 Classification: Primary Class 6
 Email: jerangle-p.school@det.nsw.edu.au

Huskisson Public School 2199

Principal: Mrs Helen Wimmer (Rel)
 Sydney St (PO Box 91)
 HUSKISSON NSW 2540
 Phone: 4441 5074
 Fax: 4441 6220
 SEG: Batemans Bay
 State Electorate: South Coast
 Federal Electorate: Gilmore
 Classification: Primary Class 4
 Email: huskisson-p.school@det.nsw.edu.au

Illawarra Environmental Education Centre 5743

Principal: Mr Stuart DeLandre
 Killalea State Park, Buckleys Rd (PO Box A124,
 SHELLHARBOUR NSW 2529)
 DUNMORE NSW 2529
 Phone: 4237 6100
 Fax: 4237 6122
 SEG: Shellharbour
 State Electorate: Kiama
 Federal Electorate: Throsby
 Classification: EEC Class 2
 Email: illawarra-e.school@det.nsw.edu.au

Illawarra Senior College 8373

Principal: Mr Mark Webster
 Military Rd (PO Box 211)
 PORT KEMBLA NSW 2505
 Phone: 4274 0621
 Fax: 4276 2835
 SEG: Wollongong
 State Electorate: Wollongong
 Federal Electorate: Throsby
 Classification: Secondary Class 9
 Email: illawarra-h.school@det.nsw.edu.au

Jamberoo Public School 2218

Principal: Mrs Pam Grosse
 Churchill St
 JAMBEROO NSW 2533
 Phone: 4236 0173
 Fax: 4236 0633
 SEG: Shoalhaven
 State Electorate: Kiama
 Federal Electorate: Gilmore
 Classification: Primary Class 4
 Email: jamberoo-p.school@det.nsw.edu.au

Jerrabomberra Public School 4633

Principal: Ms Christine Hunter
 Coachwood Ave (PO Box 319)
 JERRABOMBERRA NSW 2619
 Phone: 6299 8860
 Fax: 6299 8863
 SEG: Queanbeyan
 State Electorate: Monaro
 Federal Electorate: Eden-Monaro
 Classification: Primary Class 2
 Email: jerra-p.school@det.nsw.edu.au

Jindabyne Central School **2237**
Principal: Ms Jenne Gardner
Park Rd (PO Box 40)
JINDABYNE NSW 2627
Phone: 6456 2346
Fax: 6456 1082
SEG: Sapphire Coast/Monaro
State Electorate: Monaro
Federal Electorate: Eden-Monaro
Classification: Central/Combined Class 1
Email: jindabyne-p.school@det.nsw.edu.au

Kanahooka High School **8489**
Principal: Mr Peter Jones
Thirroul & Roberts Sts PO Box 302
KANAHOOKA NSW 2530
Phone: 4261 4011
Fax: 4261 4700
SEG: Shellharbour
State Electorate: Shellharbour
Federal Electorate: Throsby
Classification: Secondary Class 9
Email: kanahooka-h.school@det.nsw.edu.au

Kangaroo Valley Public School **2256**
Principal: Mr John Bond
Moss Vale-Nowra Rd
KANGAROO VALLEY NSW 2577
Phone: 4465 1182
Fax: 4465 1207
SEG: Shoalhaven
State Electorate: Kiama
Federal Electorate: Gilmore
Classification: Primary Class 5
Email: kangaroova-p.school@det.nsw.edu.au

Keira High School **8541**
Principal: Mr Maurie Mulheron
Lysaght St
FAIRY MEADOW NSW 2519
Phone: 4229 4644
Fax: 4226 9983
SEG: Wollongong Nth
State Electorate: Keira
Federal Electorate: Cunningham
Classification: Secondary Class 9
Email: keira-h.school@det.nsw.edu.au

Kemblawarra Public School **4083**
Principal: Ms Eleanor Thompson
Shellharbour Rd
PORT KEMBLA NSW 2505
Phone: 4274 2024
Fax: 4276 2871
SEG: Wollongong
State Electorate: Wollongong
Federal Electorate: Throsby
Classification: Primary Class 5
Email: kemblawarr-p.school@det.nsw.edu.au

John Richardson School **5450**
School in Recess

Kangaloon Public School **2255**
Principal: Mrs Jan Meadows
Robertson St
KANGALOOD NSW 2576
Phone: 4888 2215
Fax: 4888 2372
SEG: Goulburn/Highlands
State Electorate: Kiama
Federal Electorate: Gilmore
Classification: Primary Class 5
Email: kangaloon-p.school@det.nsw.edu.au

Karabar High School **8524**
Principal: Mr Paul Kells
Donald Rd
QUEANBEYAN NSW 2620
Phone: 6298 4333
Fax: 6299 3035
SEG: Queanbeyan
State Electorate: Monaro
Federal Electorate: Eden-Monaro
Classification: Secondary Class 9
Email: karabar-h.school@det.nsw.edu.au

Keiraville Public School **2271**
Principal: Ms Sherylee Carroll
Gipps Rd (PO Box 54)
KEIRAVILLE NSW 2500
Phone: 4229 4117
Fax: 4226 5084
SEG: Wollongong Nth
State Electorate: Keira
Federal Electorate: Cunningham
Classification: Primary Class 4
Email: keiraville-p.school@det.nsw.edu.au

Kiama High School **8171**
Principal: Mr Graeme Sutherland
Saddleback Mountain Rd
KIAMA NSW 2533
Phone: 4232 1911
Fax: 4233 1437
SEG: Shoalhaven
State Electorate: Kiama
Federal Electorate: Gilmore
Classification: Secondary Class 8
Email: kiama-h.school@det.nsw.edu.au

Kiama Public School 2293

Principal: Mrs Jenny Maude
 67 Bong Bong St PO Box 164
 KIAMA NSW 2533
 Phone: 4232 1471
 Fax: 4233 1438
 SEG: Shoalhaven
 State Electorate: Kiama
 Federal Electorate: Gilmore
 Classification: Primary Class 3
 Email: kiama-p.school@det.nsw.edu.au

Laggan Public School 2354

Principal: Ms Robyn Watson
 Laggan Rd
 LAGGAN NSW 2583
 Phone: 4837 3215
 Fax: 4837 3227
 SEG: Queanbeyan
 State Electorate: Burrinjuck
 Federal Electorate: Hume
 Classification: Primary Class 5
 Email: laggan-p.school@det.nsw.edu.au

Lake Illawarra High School 8474

Principal: Mr Tom Sleigh
 Reddall Pde
 LAKE ILLAWARRA NSW 2528
 Phone: 4296 3844
 Fax: 4296 3948
 SEG: Shellharbour
 State Electorate: Shellharbour
 Federal Electorate: Throsby
 Classification: Secondary Class 9
 Email: lakeillawa-h.school@det.nsw.edu.au

Lakelands Public School 4266

Principal: Mr Ian Coogan
 Lakelands Drive
 DAPTO NSW 2530
 Phone: 4261 1540
 Fax: 4262 2047
 SEG: Shellharbour
 State Electorate: Shellharbour
 Federal Electorate: Throsby
 Classification: Primary Class 3
 Email: lakelands-p.school@det.nsw.edu.au

Marulan Public School 2496

Principal: Ms Debbie Darling (Rel)
 63 George St
 MARULAN NSW 2579
 Phone: 4841 1573
 Fax: 4841 1847
 SEG: Goulburn/Highlands
 State Electorate: Goulburn
 Federal Electorate: Hume
 Classification: Primary Class 5
 Email: marulan-p.school@det.nsw.edu.au

Koonawarra Public School 4409

Principal: Mr Brendan Moore
 Byamee St
 DAPTO NSW 2530
 Phone: 4261 2880
 Fax: 4262 2046
 SEG: Shellharbour
 State Electorate: Shellharbour
 Federal Electorate: Throsby
 Classification: Primary Class 3
 Email: koonawarra-p.school@det.nsw.edu.au

Lake Heights Public School 4011

Principal: Mr Peter Heddles
 Northcliffe Drive
 LAKE HEIGHTS NSW 2502
 Phone: 4274 1740
 Fax: 4276 2872
 SEG: Wollongong
 State Electorate: Wollongong
 Federal Electorate: Throsby
 Classification: Primary Class 5
 Email: lakeheight-p.school@det.nsw.edu.au

Lake Illawarra South Public School 3867

Principal: Mrs Lorraine Bradwell
 Reddall Pde
 LAKE ILLAWARRA SOUTH NSW 2528
 Phone: 4295 1924
 Fax: 4297 2803
 SEG: Shellharbour
 State Electorate: Shellharbour
 Federal Electorate: Throsby
 Classification: Primary Class 4
 Email: lakeillaws-p.school@det.nsw.edu.au

Lindsay Park Public School 4042

Principal: Ms Keryl Robson
 Thames St
 WOLLONGONG NSW 2500
 Phone: 4229 2487
 Fax: 4228 3145
 SEG: Wollongong
 State Electorate: Keira
 Federal Electorate: Cunningham
 Classification: Primary Class 4
 Email: lindsaypk-p.school@det.nsw.edu.au

Merimbula Public School 2526

Principal: Ms Michelle Hulme (Rel)
 Main St (PO Box 48)
 MERIMBULA NSW 2548
 Phone: 6495 1266
 Fax: 6495 3239
 SEG: Sapphire Coast/Monaro
 State Electorate: Bega
 Federal Electorate: Eden-Monaro
 Classification: Primary Class 2
 Email: merimbula-p.school@det.nsw.edu.au

Michelago Public School 2540

Principal: Ms Claire Plummer
 20 Ryrie Street
 MICHELAGO NSW 2620
 Phone: 6235 9153
 Fax: 6235 9034
 SEG: Queanbeyan
 State Electorate: Monaro
 Federal Electorate: Eden-Monaro
 Classification: Primary Class 5
 Email: michelago-p.school@det.nsw.edu.au

Minnamurra Public School 4498

Principal: Mr Warren Grosse
 Charles Ave
 MINNAMURRA NSW 2532
 Phone: 4237 7501
 Fax: 4237 8393
 SEG: Shoalhaven
 State Electorate: Kiama
 Federal Electorate: Gilmore
 Classification: Primary Class 2
 Email: minnamurra-p.school@det.nsw.edu.au

Mogo Public School 2586

Principal: Mr Jason Barby
 Princes Hwy
 MOGO NSW 2536
 Phone: 4474 4815
 Fax: 4474 4806
 SEG: Batemans Bay
 State Electorate: Bega
 Federal Electorate: Eden-Monaro
 Classification: Primary Class 5
 Email: mogo-p.school@det.nsw.edu.au

Moruya High School 8368

Principal: Mr John Walsh
 Albert St
 MORUYA NSW 2537
 Phone: 4474 2155
 Fax: 4474 3782
 SEG: Batemans Bay
 State Electorate: Bega
 Federal Electorate: Eden-Monaro
 Classification: Secondary Class 9
 Email: moruya-h.school@det.nsw.edu.au

Moss Vale High School 8388

Principal: Ms Suzanne Williams
 Narellan Rd (PO Box 137)
 MOSS VALE NSW 2577
 Phone: 4868 1717
 Fax: 4868 2787
 SEG: Goulburn/Highlands
 State Electorate: Goulburn
 Federal Electorate: Gilmore
 Classification: Secondary Class 9
 Email: mossvale-h.school@det.nsw.edu.au

Milton Public School 2565

Principal: Mrs Mary-Lou Barclay
 Thomas St
 MILTON NSW 2538
 Phone: 4455 1504
 Fax: 4454 0456
 SEG: Batemans Bay
 State Electorate: South Coast
 Federal Electorate: Gilmore
 Classification: Primary Class 2
 Email: milton-p.school@det.nsw.edu.au

Mittagong Public School 2581

Principal: Ms Garrie Olsen (Rel)
 21 Pioneer St (PO Box 741)
 MITTAGONG NSW 2575
 Phone: 4871 1020
 Fax: 4872 1460
 SEG: Goulburn/Highlands
 State Electorate: Goulburn
 Federal Electorate: Hume
 Classification: Primary Class 3
 Email: mittagong-p.school@det.nsw.edu.au

Monaro High School 8196

Principal: Mr Peter King
 Mittagong Rd
 COOMA NORTH NSW 2629
 Phone: 6452 4611
 Fax: 6452 3629
 SEG: Sapphire Coast/Monaro
 State Electorate: Monaro
 Federal Electorate: Eden-Monaro
 Classification: Secondary Class 9
 Email: monaro-h.school@det.nsw.edu.au

Moruya Public School 2628

Principal: Mr Peter Johnson
 22 Evans St
 MORUYA NSW 2537
 Phone: 4474 2363
 Fax: 4474 2919
 SEG: Batemans Bay
 State Electorate: Bega
 Federal Electorate: Eden-Monaro
 Classification: Primary Class 3
 Email: moruya-p.school@det.nsw.edu.au

Moss Vale Public School 2631

Principal: Mr Laurie Connery
 Browley St
 MOSS VALE NSW 2577
 Phone: 4868 1866
 Fax: 4869 1116
 SEG: Goulburn/Highlands
 State Electorate: Goulburn
 Federal Electorate: Gilmore
 Classification: Primary Class 2
 Email: mossvale-p.school@det.nsw.edu.au

Mount Brown Public School 4423

Principal: Ms Katherine Spencer
 Mount Brown Rd
 DAPTO NSW 2530
 Phone: 4261 3855
 Fax: 4261 1020
 SEG: Shellharbour
 State Electorate: Shellharbour
 Federal Electorate: Throsby
 Classification: Primary Class 2
 Email: mountbrown-p.school@det.nsw.edu.au

Mount Kembla Public School 2643

Principal: Mr Peter Houweling
 Cordeaux Rd
 MOUNT KEMBLA NSW 2526
 Phone: 4271 2565
 Fax: 4271 4847
 SEG: Wollongong
 State Electorate: Wollongong
 Federal Electorate: Cunningham
 Classification: Primary Class 4
 Email: mtkembla-p.school@det.nsw.edu.au

Mount St Thomas Public School 3881

Principal: Ms Christine Arthur
 Taronga Ave
 WOLLONGONG NSW 2500
 Phone: 4229 2192
 Fax: 4226 5086
 SEG: Wollongong
 State Electorate: Wollongong
 Federal Electorate: Cunningham
 Classification: Primary Class 3
 Email: mtstthomas-p.school@det.nsw.edu.au

Mount Warrigal Public School 4395

Principal: Ms Suzanne Lazenby
 2 Hogarth Ave
 WARILLA NSW 2528
 Phone: 4296 6266
 Fax: 4297 2816
 SEG: Shellharbour
 State Electorate: Shellharbour
 Federal Electorate: Throsby
 Classification: Primary Class 3
 Email: mtwarrigal-p.school@det.nsw.edu.au

Nareena Hills Public School 4500

Principal: Mr Robert Long
 Jacaranda Ave
 FIGTREE NSW 2525
 Phone: 4226 3867
 Fax: 4226 5087
 SEG: Wollongong
 State Electorate: Keira
 Federal Electorate: Cunningham
 Classification: Primary Class 4
 Email: nareenahil-p.school@det.nsw.edu.au

Mount Keira Public School 2642

Principal: Mr Craig Redfern
 255 Mount Keira Rd
 MOUNT KEIRA NSW 2500
 Phone: 4229 1446
 Fax: 4226 9985
 SEG: Wollongong
 State Electorate: Keira
 Federal Electorate: Cunningham
 Classification: Primary Class 5
 Email: mtkeira-p.school@det.nsw.edu.au

Mount Ousley Public School 4095

Principal: Mr Peter Holmes
 McGrath St
 FAIRY MEADOW NSW 2519
 Phone: 4285 4211
 Fax: 4284 3142
 SEG: Wollongong Nth
 State Electorate: Keira
 Federal Electorate: Cunningham
 Classification: Primary Class 4
 Email: mtousley-p.school@det.nsw.edu.au

Mount Terry Public School 4610

Principal: Mr Stuart Dewar
 Terry St (PO Box 34)
 ALBION PARK NSW 2527
 Phone: 4257 4370
 Fax: 4257 4380
 SEG: Shellharbour
 State Electorate: Kiama
 Federal Electorate: Throsby
 Classification: Primary Class 2
 Email: mtterry-p.school@det.nsw.edu.au

Mulwaree High School 8468

Principal: Mr Tom Coll
 McDermott Drive
 GOULBURN NSW 2580
 Phone: 4821 4499
 Fax: 4822 1432
 SEG: Goulburn/Highlands
 State Electorate: Goulburn
 Federal Electorate: Hume
 Classification: Secondary Class 9
 Email: mulwaree-h.school@det.nsw.edu.au

Narooma High School 8536

Principal: Mr Tony Fahey
 Princes Hwy
 NAROOMA NSW 2546
 Phone: 4476 4377
 Fax: 4476 3953
 SEG: Batemans Bay
 State Electorate: Bega
 Federal Electorate: Eden-Monaro
 Classification: Secondary Class 9
 Email: narooma-h.school@det.nsw.edu.au

Narooma Public School 2758

Principal: Ms Marilyn Gibson
 Montague St
 NAROOMA NSW 2546
 Phone: 4476 2556
 Fax: 4476 2264
 SEG: Batemans Bay
 State Electorate: Bega
 Federal Electorate: Eden-Monaro
 Classification: Primary Class 3
 Email: narooma-p.school@det.nsw.edu.au

North Nowra Public School 4618

Principal: Mr David Hogg
 Judith Drive
 NORTH NOWRA NSW 2541
 Phone: 4422 7045
 Fax: 4422 9035
 SEG: Shoalhaven
 State Electorate: Kiama
 Federal Electorate: Gilmore
 Classification: Primary Class 4
 Email: northnowra-p.school@det.nsw.edu.au

Nowra High School 8201

Principal: Mr Wayne Pryce
 Moss St
 NOWRA NSW 2541
 Phone: 4421 4977
 Fax: 4421 3284
 SEG: Shoalhaven
 State Electorate: South Coast
 Federal Electorate: Gilmore
 Classification: Secondary Class 8
 Email: nowra-h.school@det.nsw.edu.au

Nowra Public School 2769

Principal: Mr Clive Robertson
 74 Plunkett St
 NOWRA NSW 2541
 Phone: 4422 0401
 Fax: 4423 2237
 SEG: Shoalhaven
 State Electorate: South Coast
 Federal Electorate: Gilmore
 Classification: Primary Class 2
 Email: nowra-p.school@det.nsw.edu.au

Oak Flats High School 8906

Principal: Mr Col Harris
 The Esplanade PO Box 122
 OAK FLATS NSW 2529
 Phone: 4256 1888
 Fax: 4257 1825
 SEG: Shellharbour
 State Electorate: Shellharbour
 Federal Electorate: Throsby
 Classification: Secondary Class 9
 Email: oakflats-h.school@det.nsw.edu.au

Nimmitabel Public School 2752

Principal: Ms Melissa Day
 Wolfe St
 NIMMITABEL NSW 2631
 Phone: 6454 6205
 Fax: 6454 6405
 SEG: Sapphire Coast/Monaro
 State Electorate: Monaro
 Federal Electorate: Eden-Monaro
 Classification: Primary Class 5
 Email: nimmitabel-p.school@det.nsw.edu.au

Nowra East Public School 4256

Principal: Mr Michael Honeywood
 Jervis St
 NOWRA EAST NSW 2541
 Phone: 4421 3539
 Fax: 4423 2686
 SEG: Shoalhaven
 State Electorate: South Coast
 Federal Electorate: Gilmore
 Classification: Primary Class 3
 Email: nowraeast-p.school@det.nsw.edu.au

Nowra Hill Public School 4106

Principal: Mr Tony McCann
 Naval Air Station (PO Box A4 NOWRA NAVEL BASE
 NSW 2540)
 NOWRA NSW 2541
 Phone: 4421 5671
 Fax: 4423 2148
 SEG: Shoalhaven
 State Electorate: South Coast
 Federal Electorate: Gilmore
 Classification: Primary Class 5
 Email: nowrahill-p.school@det.nsw.edu.au

Numeralla Public School 2778

Principal: Ms Jan Rogers
 9 Richardson St
 NUMERALLA NSW 2630
 Phone: 6453 3211
 Fax: 6453 3242
 SEG: Sapphire Coast/Monaro
 State Electorate: Monaro
 Federal Electorate: Eden-Monaro
 Classification: Primary Class 6
 Email: numeralla-p.school@det.nsw.edu.au

Oak Flats Public School 3860

Principal: Mr Greg Wells
 Griffiths St
 OAK FLATS NSW 2529
 Phone: 4256 1405
 Fax: 4256 1800
 SEG: Shellharbour
 State Electorate: Shellharbour
 Federal Electorate: Throsby
 Classification: Primary Class 2
 Email: oakflats-p.school@det.nsw.edu.au

Otford Public School 2818

Principal: Ms Anne-Marie Hurley
 Station Rd
 OTFORD NSW 2508
 Phone: 4294 1323
 Fax: 4294 3675
 SEG: Wollongong Nth
 State Electorate: Heathcote
 Federal Electorate: Cunningham
 Classification: Primary Class 5
 Email: otford-p.school@det.nsw.edu.au

Para Meadows School 5644

Principal: Ms Linda McLaughlin
 56 Porter St
 NORTH WOLLONGONG NSW 2500
 Phone: 4229 1922
 Fax: 4226 5089
 SEG: Wollongong Nth
 State Electorate: Wollongong
 Federal Electorate: Cunningham
 Classification: SSP Class 2
 Email: parameadow-s.school@det.nsw.edu.au

Peterborough School 5666

Principal: Ms Sue Corkery
 William Ave (PO Box 332)
 WARILLA NSW 2528
 Phone: 4297 1611
 Fax: 4297 2804
 SEG: Shellharbour
 State Electorate: Shellharbour
 Federal Electorate: Throsby
 Classification: SSP Class 4
 Email: peterboro-s.school@det.nsw.edu.au

Port Kembla Public School 2896

Principal: Mr Kevin Tucker
 Gloucester Boulevard
 PORT KEMBLA NSW 2505
 Phone: 4274 1041
 Fax: 4276 2840
 SEG: Wollongong
 State Electorate: Wollongong
 Federal Electorate: Throsby
 Classification: Primary Class 4
 Email: ptkembla-p.school@det.nsw.edu.au

Quaama Public School 2917

Principal: Ms Jennifer Hobbs-Bussell (Rel)
 48 Cobargo St (PO Box 6004)
 QUAAMA NSW 2550
 Phone: 6493 8213
 Fax: 6493 8345
 SEG: Sapphire Coast/Monaro
 State Electorate: Bega
 Federal Electorate: Eden-Monaro
 Classification: Primary Class 5
 Email: quaama-p.school@det.nsw.edu.au

Pambula Public School 2831

Principal: Mr Les Dirou (Rel)
 25 Oregon St
 PAMBULA NSW 2549
 Phone: 6495 6006
 Fax: 6495 6426
 SEG: Sapphire Coast/Monaro
 State Electorate: Bega
 Federal Electorate: Eden-Monaro
 Classification: Primary Class 3
 Email: pambula-p.school@det.nsw.edu.au

Penrose Public School 2860

Principal: Ms Gillian Irvine (Rel)
 Penrose Rd
 PENROSE NSW 2579
 Phone: 4884 4238
 Fax: 4884 4493
 SEG: Goulburn/Highlands
 State Electorate: Goulburn
 Federal Electorate: Gilmore
 Classification: Primary Class 6
 Email: penrose-p.school@det.nsw.edu.au

Pleasant Heights Public School 4357

Principal: Ms Lee Venables
 Alvan Pde (PO Box 291, FAIRY MEADOW NSW 2519)
 MOUNT PLEASANT NSW 2519
 Phone: 4284 6962
 Fax: 4284 4079
 SEG: Wollongong Nth
 State Electorate: Keira
 Federal Electorate: Cunningham
 Classification: Primary Class 4
 Email: pleasantht-p.school@det.nsw.edu.au

Primbee Public School 2904

Principal: Mrs Dorothy Cass
 43 Illowra Cres
 PRIMBEE NSW 2504
 Phone: 4274 1974
 Fax: 4276 2837
 SEG: Shellharbour
 State Electorate: Wollongong
 Federal Electorate: Throsby
 Classification: Primary Class 5
 Email: primbee-p.school@det.nsw.edu.au

Queanbeyan East Public School 4371

Principal: Mr Howard Mackinder
 Yass St (PO Box 562)
 QUEANBEYAN NSW 2620
 Phone: 6297 2619
 Fax: 6299 4128
 SEG: Queanbeyan
 State Electorate: Monaro
 Federal Electorate: Eden-Monaro
 Classification: Primary Class 5
 Email: queanbeyae-p.school@det.nsw.edu.au

Queanbeyan High School 8216

Principal: Mr John Clark
 Agnes Ave
 QUEANBEYAN NSW 2620
 Phone: 6297 2088
 Fax: 6299 4285
 SEG: Queanbeyan
 State Electorate: Monaro
 Federal Electorate: Eden-Monaro
 Classification: Secondary Class 9
 Email: queanbeyan-h.school@det.nsw.edu.au

Queanbeyan South Public School 4394

Principal: Ms Genevieve Jackson
 Cameron Rd
 QUEANBEYAN NSW 2620
 Phone: 6297 3655
 Fax: 6299 3350
 SEG: Queanbeyan
 State Electorate: Monaro
 Federal Electorate: Eden-Monaro
 Classification: Primary Class 2
 Email: queanbeyas-p.school@det.nsw.edu.au

Reids Flat Public School 2953

Principal: Ms Melody Thompson
 6 Albert St
 REIDS FLAT NSW 2586
 Phone: 6345 2231
 Fax: 6345 2248
 SEG: Queanbeyan
 State Electorate: Burrinjuck
 Federal Electorate: Hume
 Classification: Primary Class 6
 Email: reidsflat-p.school@det.nsw.edu.au

Rugby Public School 3012

Principal: Ms Melanie Brougham
 Boorowa-Crookwell Rd
 RUGBY NSW 2583
 Phone: 4835 7241
 Fax: 4835 7205
 SEG: Queanbeyan
 State Electorate: Burrinjuck
 Federal Electorate: Hume
 Classification: Primary Class 6
 Email: rugby-p.school@det.nsw.edu.au

Rye Park Public School 3024

Principal: Ms Michelle Fahey
 Boorowa-Gunning Rd
 RYE PARK NSW 2586
 Phone: 6227 2251
 Fax: 6227 2256
 SEG: Queanbeyan
 State Electorate: Burrinjuck
 Federal Electorate: Hume
 Classification: Primary Class 6
 Email: ryepark-p.school@det.nsw.edu.au

Queanbeyan Public School 2922

Principal: Mr Mark Pritchard
 Isabella St
 QUEANBEYAN NSW 2620
 Phone: 6297 2144
 Fax: 6299 4282
 SEG: Queanbeyan
 State Electorate: Monaro
 Federal Electorate: Eden-Monaro
 Classification: Primary Class 1
 Email: queanbeyan-p.school@det.nsw.edu.au

Queanbeyan West Public School 4127

Principal: Ms Vicki Muscat
 Morton St
 QUEANBEYAN NSW 2620
 Phone: 6297 2020
 Fax: 6299 4284
 SEG: Queanbeyan
 State Electorate: Monaro
 Federal Electorate: Eden-Monaro
 Classification: Primary Class 3
 Email: queanbeyaw-p.school@det.nsw.edu.au

Robertson Public School 2971

Principal: Mr David McAndrew (Rel)
 Hoddle St
 ROBERTSON NSW 2577
 Phone: 4885 1284
 Fax: 4885 1119
 SEG: Goulburn/Highlands
 State Electorate: Kiama
 Federal Electorate: Gilmore
 Classification: Primary Class 4
 Email: robertson-p.school@det.nsw.edu.au

Russell Vale Public School 3973

Principal: Mr Mark Griersen
 Terania St
 RUSSELL VALE NSW 2517
 Phone: 4284 4396
 Fax: 4285 1761
 SEG: Wollongong Nth
 State Electorate: Keira
 Federal Electorate: Cunningham
 Classification: Primary Class 3
 Email: russellval-p.school@det.nsw.edu.au

Sanctuary Point Public School 4464

Principal: Mr Michael Mullane
 Idlewild Ave PO Box 89
 SANCTUARY POINT NSW 2540
 Phone: 4443 0546
 Fax: 4443 7036
 SEG: Batemans Bay
 State Electorate: South Coast
 Federal Electorate: Gilmore
 Classification: Primary Class 2
 Email: sancturypt-p.school@det.nsw.edu.au

Scarborough Public School 3045

Principal: Mr James McGill (Rel)
 Lawrence Hargrave Drive (PO Box 800, THIRROUL
 NSW 2515)
 SCARBOROUGH NSW 2515
 Phone: 4267 2153
 Fax: 4268 1461
 SEG: Wollongong Nth
 State Electorate: Heathcote
 Federal Electorate: Cunningham
 Classification: Primary Class 5
 Email: scarboroug-p.school@det.nsw.edu.au

Shellharbour Public School 3060

Principal: Dr John MacDonald
 Mary St
 SHELLHARBOUR NSW 2529
 Phone: 4295 1334
 Fax: 4297 2399
 SEG: Shellharbour
 State Electorate: Shellharbour
 Federal Electorate: Throsby
 Classification: Primary Class 3
 Email: shellharb-p.school@det.nsw.edu.au

Shoalhaven High School 8561

Principal: Mr John Sweet
 Park Rd (PO Box 4041, NOWRA EAST NSW 2541)
 NOWRA NSW 2541
 Phone: 4421 8022
 Fax: 4423 0272
 SEG: Shoalhaven
 State Electorate: South Coast
 Federal Electorate: Gilmore
 Classification: Secondary Class 8
 Email: shoalhaven-h.school@det.nsw.edu.au

St Georges Basin Public School 3673

Principal: Mr Grahame Allen
 Tallyan Point Rd
 BASIN VIEW NSW 2540
 Phone: 4443 4251
 Fax: 4443 4835
 SEG: Batemans Bay
 State Electorate: South Coast
 Federal Electorate: Gilmore
 Classification: Primary Class 3
 Email: stgeorgesb-p.school@det.nsw.edu.au

Sunshine Bay Public School 4562

Principal: Mr Roy Counsell
 Beach Rd
 BATEHAVEN NSW 2536
 Phone: 4472 6464
 Fax: 4472 6587
 SEG: Batemans Bay
 State Electorate: Bega
 Federal Electorate: Gilmore
 Classification: Primary Class 3
 Email: sunshineba-p.school@det.nsw.edu.au

Shell Cove Public School 4641

Principal: Mr David Gore (Rel)
 Cnr Killalea Drive & Stradbroke Ave (PO Box 33,
 SHELLHARBOUR NSW 2529)
 SHELL COVE NSW 2529
 Phone: 4297 2247
 Fax: 4297 3357
 SEG: Shellharbour
 State Electorate: Kiama
 Federal Electorate: Throsby
 Classification: Primary Class 3
 Email: shellcove-p.school@det.nsw.edu.au

Shoalhaven Heads Public School 1625

Principal: Mr Mark McCarthy
 Ravenscliff Rd
 SHOALHAVEN HEADS NSW 2535
 Phone: 4448 7174
 Fax: 4448 7086
 SEG: Shoalhaven
 State Electorate: Kiama
 Federal Electorate: Gilmore
 Classification: Primary Class 4
 Email: shoalhaven-p.school@det.nsw.edu.au

Smiths Hill High School 8542

Principal: Mrs Rae Mitchell
 Gipps St PO Box 110, KEIRAVILLE 2500
 WOLLONGONG NSW 2500
 Phone: 4229 4266
 Fax: 4226 5104
 SEG: Wollongong
 State Electorate: Wollongong
 Federal Electorate: Cunningham
 Classification: Secondary Class 9
 Email: smithshill-h.school@det.nsw.edu.au

Stanwell Park Public School 3103

Principal: Mr Keith Tomlinson
 Stanwell Ave PO Box 469, HELENSBURGH 2508
 STANWELL PARK NSW 2508
 Phone: 4294 1191
 Fax: 4294 3691
 SEG: Wollongong Nth
 State Electorate: Heathcote
 Federal Electorate: Cunningham
 Classification: Primary Class 4
 Email: stanwellpk-p.school@det.nsw.edu.au

Sussex Inlet Public School 3659

Principal: Mrs Chris McLean
 Thomson St
 SUSSEX INLET NSW 2540
 Phone: 4441 2053
 Fax: 4441 1729
 SEG: Batemans Bay
 State Electorate: South Coast
 Federal Electorate: Gilmore
 Classification: Primary Class 3
 Email: sussexinle-p.school@det.nsw.edu.au

Sutton Forest Public School 3138

Principal: Ms Jacqueline Crockford
 Illawarra Hwy
 SUTTON FOREST NSW 2577
 Phone: 4868 1430
 Fax: 4868 3527
 SEG: Goulburn/Highlands
 State Electorate: Goulburn
 Federal Electorate: Gilmore
 Classification: Primary Class 5
 Email: suttonfore-p.school@det.nsw.edu.au

Tallong Public School 3154

Principal: Ms Christine Alderton
 Old Marulan Rd
 TALLONG NSW 2579
 Phone: 4841 0292
 Fax: 4841 0240
 SEG: Goulburn/Highlands
 State Electorate: Goulburn
 Federal Electorate: Hume
 Classification: Primary Class 5
 Email: tallong-p.school@det.nsw.edu.au

Tanja Public School 3159

Principal: Mrs Roz Bannon
 Barrabooka Rd
 TANJA NSW 2550
 Phone: 6494 0122
 Fax: 6494 0245
 SEG: Sapphire Coast/Monaro
 State Electorate: Bega
 Federal Electorate: Eden-Monaro
 Classification: Primary Class 6
 Email: tanja-p.school@det.nsw.edu.au

Taralga Public School 3163

Principal: Ms Ann Patchett
 Orchard St
 TARALGA NSW 2580
 Phone: 4840 2047
 Fax: 4840 2152
 SEG: Queanbeyan
 State Electorate: Burrinjuck
 Federal Electorate: Hume
 Classification: Primary Class 5
 Email: taralga-p.school@det.nsw.edu.au

Tathra Public School 3173

Principal: Mr Gary Thomson
 Bega St
 TATHRA NSW 2550
 Phone: 6494 1291
 Fax: 6494 1057
 SEG: Sapphire Coast/Monaro
 State Electorate: Bega
 Federal Electorate: Eden-Monaro
 Classification: Primary Class 4
 Email: tathra-p.school@det.nsw.edu.au

Sutton Public School 3137

Principal: Ms Jenny Cooper
 Bywong St
 SUTTON NSW 2620
 Phone: 6230 3215
 Fax: 6230 3327
 SEG: Queanbeyan
 State Electorate: Monaro
 Federal Electorate: Hume
 Classification: Primary Class 5
 Email: sutton-p.school@det.nsw.edu.au

Tangara School 5684

Principal: Mr Tom Bowen
 Bong Bong Rd (PO Box 726)
 MITTAGONG NSW 2575
 Phone: 4871 1636
 Fax: 4872 1463
 SEG: Goulburn/Highlands
 State Electorate: Goulburn
 Federal Electorate: Hume
 Classification: SSP Class 5
 Email: tangara-s.school@det.nsw.edu.au

Tarago Public School 3162

Principal: Mr Ian Quill
 Goulburn-Braidwood Rd
 TARAGO NSW 2580
 Phone: 4849 4418
 Fax: 4849 4462
 SEG: Queanbeyan
 State Electorate: Burrinjuck
 Federal Electorate: Hume
 Classification: Primary Class 5
 Email: tarago-p.school@det.nsw.edu.au

Tarrawanna Public School 3820

Principal: Ms Norma Blinkhorn
 Kendall St
 TARRAWANNA NSW 2518
 Phone: 4284 4662
 Fax: 4285 1389
 SEG: Wollongong Nth
 State Electorate: Keira
 Federal Electorate: Cunningham
 Classification: Primary Class 5
 Email: tarrawanna-p.school@det.nsw.edu.au

Terara Public School 3185

Principal: Mr Rod White
 Millbank Rd
 TERARA NSW 2540
 Phone: 4421 6034
 Fax: 4423 1752
 SEG: Shoalhaven
 State Electorate: South Coast
 Federal Electorate: Gilmore
 Classification: Primary Class 5
 Email: terara-p.school@det.nsw.edu.au

The Crescent School 5634

Principal: Mr Peter Pilgrim
 Fitzroy St
 GOULBURN NSW 2580
 Phone: 4821 3680
 Fax: 4821 1224
 SEG: Goulburn/Highlands
 State Electorate: Goulburn
 Federal Electorate: Hume
 Classification: SSP Class 4
 Email: crescent-s.school@det.nsw.edu.au

Tirranna Public School 3222

Principal: Ms Suzanne Cartwright
 Goulburn-Braidwood Rd
 GOULBURN NSW 2580
 Phone: 4821 4645
 Fax: 4821 4363
 SEG: Queanbeyan
 State Electorate: Goulburn
 Federal Electorate: Hume
 Classification: Primary Class 5
 Email: tirranna-p.school@det.nsw.edu.au

Towamba Public School 3252

Principal: Mr Gareth Hockings
 Towamba St
 TOWAMBA NSW 2550
 Phone: 6496 7159
 Fax: 6496 7059
 SEG: Sapphire Coast/Monaro
 State Electorate: Bega
 Federal Electorate: Eden-Monaro
 Classification: Primary Class 5
 Email: towamba-p.school@det.nsw.edu.au

Tullimbar Public School 4969

Principal: Mr John Clune
 Exeter Place
 TULLIMBAR NSW 2527
 Phone: 4257 7261
 Fax: 4257 8153
 SEG: Shellharbour
 State Electorate: Shellharbour
 Federal Electorate: Shellharbour
 Classification: Primary Class 4
 Email: tullimbar-p.school@det.nsw.edu.au

Ulladulla Public School 3302

Principal: Mrs Narelle Harding
 Green St
 ULLADULLA NSW 2539
 Phone: 4455 1649
 Fax: 4454 0752
 SEG: Batemans Bay
 State Electorate: South Coast
 Federal Electorate: Gilmore
 Classification: Primary Class 1
 Email: ulladulla-p.school@det.nsw.edu.au

Thirroul Public School 3201

Principal: Mrs Janice Cherubini
 Roxburgh Ave (PO Box 254)
 THIRROUL NSW 2515
 Phone: 4267 1469
 Fax: 4268 1463
 SEG: Wollongong Nth
 State Electorate: Heathcote
 Federal Electorate: Cunningham
 Classification: Primary Class 3
 Email: thirroul-p.school@det.nsw.edu.au

Tomerong Public School 3226

Principal: Ms Kim Harington (Rel)
 355 Hawkens Rd
 TOMERONG NSW 2540
 Phone: 4443 4376
 Fax: 4443 5073
 SEG: Batemans Bay
 State Electorate: South Coast
 Federal Electorate: Gilmore
 Classification: Primary Class 4
 Email: tomerong-p.school@det.nsw.edu.au

Towradgi Public School 3866

Principal: Mr David O'Connor (Rel)
 Carters Lane
 FAIRY MEADOW NSW 2519
 Phone: 4284 4527
 Fax: 4284 8826
 SEG: Wollongong Nth
 State Electorate: Keira
 Federal Electorate: Cunningham
 Classification: Primary Class 5
 Email: towradgi-p.school@det.nsw.edu.au

Ulladulla High School 8495

Principal: Mrs Tracy Provest
 55 South St (PO Box 132)
 ULLADULLA NSW 2539
 Phone: 4455 1799
 Fax: 4454 0759
 SEG: Batemans Bay
 State Electorate: South Coast
 Federal Electorate: Gilmore
 Classification: Secondary Class 8
 Email: ulladulla-h.school@det.nsw.edu.au

Unanderra Public School 3308

Principal: Mr Alan Broadhead
 49 Derribong Drive
 CORDEAUX HEIGHTS NSW 2526
 Phone: 4272 8730
 Fax: 4272 8734
 SEG: Wollongong
 State Electorate: Wollongong
 Federal Electorate: Cunningham
 Classification: Primary Class 2
 Email: unanderra-p.school@det.nsw.edu.au

Vincentia High School 8593

Principal: Mr Stephen Glenday
 The Wool Rd
 VINCENTIA NSW 2540
 Phone: 4441 6766
 Fax: 4441 6000
 SEG: Batemans Bay
 State Electorate: South Coast
 Federal Electorate: Gilmore
 Classification: Secondary Class 8
 Email: vincentia-h.school@det.nsw.edu.au

Waniora Public School 3960

Principal: Ms Nanette Warner
 Ursula Rd (PO Box 237, WOONONA NSW 2517)
 BULLI NSW 2516
 Phone: 4284 3318
 Fax: 4284 9137
 SEG: Wollongong Nth
 State Electorate: Heathcote
 Federal Electorate: Cunningham
 Classification: Primary Class 4
 Email: waniora-p.school@det.nsw.edu.au

Warilla North Public School 4333

Principal: Mr Peter O'Brien
 Oldfield St
 LAKE ILLAWARRA SOUTH NSW 2528
 Phone: 4295 1657
 Fax: 4296 8851
 SEG: Shellharbour
 State Electorate: Shellharbour
 Federal Electorate: Throsby
 Classification: Primary Class 4
 Email: warillanth-p.school@det.nsw.edu.au

Warrawong High School 8480

Principal: Mr Stephen Goodley
 127 Cowper St PO Box 105
 WARRAWONG NSW 2502
 Phone: 4274 0707
 Fax: 4276 2836
 SEG: Wollongong
 State Electorate: Wollongong
 Federal Electorate: Throsby
 Classification: Secondary Class 9
 Email: warrawong-h.school@det.nsw.edu.au

Wee Jasper Public School 3412

Principal: Mr Mark Sullivan
 6443 Wee Jasper Rd
 WEE JASPER NSW 2582
 Phone: 6227 9652
 Fax: 6227 9617
 SEG: Queanbeyan
 State Electorate: Burrinjuck
 Federal Electorate: Hume
 Classification: Primary Class 6
 Email: weejasper-p.school@det.nsw.edu.au

Vincentia Public School 4592

Principal: Mr Bill Field
 George Caley Place
 VINCENTIA NSW 2540
 Phone: 4441 7188
 Fax: 4441 5192
 SEG: Batemans Bay
 State Electorate: South Coast
 Federal Electorate: Gilmore
 Classification: Primary Class 3
 Email: vincentia-p.school@det.nsw.edu.au

Warilla High School 8418

Principal: Mr Glenn Isemonger
 Keross Ave
 BARRACK HEIGHTS NSW 2528
 Phone: 4296 3055
 Fax: 4297 2817
 SEG: Shellharbour
 State Electorate: Shellharbour
 Federal Electorate: Throsby
 Classification: Secondary Class 8
 Email: warilla-h.school@det.nsw.edu.au

Warilla Public School 4005

Principal: Ms Vicky McGee (Act)
 Leawarra Ave
 WARILLA NSW 2528
 Phone: 4295 1867
 Fax: 4296 2417
 SEG: Shellharbour
 State Electorate: Shellharbour
 Federal Electorate: Throsby
 Classification: Primary Class 3
 Email: warilla-p.school@det.nsw.edu.au

Warrawong Public School 3104

Principal: Ms Karen Hodge
 Cowper St (PO Box 118)
 WARRAWONG NSW 2502
 Phone: 4274 1399
 Fax: 4276 2789
 SEG: Wollongong
 State Electorate: Wollongong
 Federal Electorate: Throsby
 Classification: Primary Class 3
 Email: warrawong-p.school@det.nsw.edu.au

Windang Public School 1992

Principal: Mrs Susan Tolhurst
 Oakland Ave
 WINDANG NSW 2528
 Phone: 4295 1852
 Fax: 4297 2806
 SEG: Shellharbour
 State Electorate: Wollongong
 Federal Electorate: Throsby
 Classification: Primary Class 4
 Email: windang-p.school@det.nsw.edu.au

Windellama Public School 3457

Principal: Mr Tony McCartney
 3426 Goulburn-Windellama Rd
 GOULBURN NSW 2580
 Phone: 4844 5130
 Fax: 4844 5265
 SEG: Queanbeyan
 State Electorate: Goulburn
 Federal Electorate: Hume
 Classification: Primary Class 5
 Email: windellama-p.school@det.nsw.edu.au

Wollondilly Public School 4438

Principal: Mrs Ros Adamson
 Newton & Hoskins Sts
 GOULBURN NSW 2580
 Phone: 4821 4496
 Fax: 4821 4462
 SEG: Goulburn/Highlands
 State Electorate: Goulburn
 Federal Electorate: Gilmore
 Classification: Primary Class 3
 Email: wollondill-p.school@det.nsw.edu.au

Wollongong Public School 3954

Principal: Mr Harold Cosier
 Church St
 WOLLONGONG NSW 2500
 Phone: 4228 9120
 Fax: 4226 5091
 SEG: Wollongong Nth
 State Electorate: Wollongong
 Federal Electorate: Cunningham
 Classification: Primary Class 4
 Email: wollongong-p.school@det.nsw.edu.au

Wolumla Public School 3479

Principal: Mr John Dransfield
 Princes Hwy
 WOLUMLA NSW 2550
 Phone: 6494 9226
 Fax: 6494 9364
 SEG: Sapphire Coast/Monaro
 State Electorate: Bega
 Federal Electorate: Eden-Monaro
 Classification: Primary Class 5
 Email: wolumla-p.school@det.nsw.edu.au

Woonona High School 8410

Principal: Mr Martin Arrowsmith
 Nicholson Lane
 WOONONA NSW 2517
 Phone: 4283 1623
 Fax: 4285 1485
 SEG: Wollongong Nth
 State Electorate: Keira
 Federal Electorate: Cunningham
 Classification: Secondary Class 9
 Email: woonona-h.school@det.nsw.edu.au

Wingello Public School 3461

Principal: Ms Jacqueline Murphy-Cann
 Murrimba Rd
 WINGELLO NSW 2579
 Phone: 4884 4317
 Fax: 4884 4499
 SEG: Goulburn/Highlands
 State Electorate: Goulburn
 Federal Electorate: Gilmore
 Classification: Primary Class 5
 Email: wingello-p.school@det.nsw.edu.au

Wollongong High School of the Performing Arts 8143

Principal: Ms Marian Grant
 Lysaght St
 FAIRY MEADOW NSW 2519
 Phone: 4229 6844
 Fax: 4226 4128
 SEG: Wollongong Nth
 State Electorate: Keira
 Federal Electorate: Cunningham
 Classification: Secondary Class 8
 Email: wollongong-h.school@det.nsw.edu.au

Wollongong West Public School 3477

Principal: Ms Cathy Reade
 Crown St West
 WOLLONGONG NSW 2500
 Phone: 4229 2096
 Fax: 4226 5057
 SEG: Wollongong Nth
 State Electorate: Wollongong
 Federal Electorate: Cunningham
 Classification: Primary Class 4
 Email: wollongwst-p.school@det.nsw.edu.au

Woonona East Public School 4296

Principal: Ms Sharyn Liddle
 Royal Cres
 WOONONA NSW 2517
 Phone: 4284 1472
 Fax: 4283 2507
 SEG: Wollongong Nth
 State Electorate: Keira
 Federal Electorate: Cunningham
 Classification: Primary Class 4
 Email: woononaest-p.school@det.nsw.edu.au

Woonona Public School 3510

Principal: Mr Terry Fisher
 Gray St
 WOONONA NSW 2517
 Phone: 4284 4316
 Fax: 4283 4216
 SEG: Wollongong Nth
 State Electorate: Keira
 Federal Electorate: Cunningham
 Classification: Primary Class 3
 Email: woonona-p.school@det.nsw.edu.au

Wyndham Public School 3525

Principal: Ms Terry-Lee Prowse (Rel)
Monaro St
WYNDHAM NSW 2550
Phone: 6494 2128
Fax: 6494 2231
SEG: Sapphire Coast/Monaro
State Electorate: Bega
Federal Electorate: Eden-Monaro
Classification: Primary Class 5
Email: wyndham-p.school@det.nsw.edu.au

Yass High School 8334

Principal: Mr Paul Bills
Grampian St (Locked Bag 1)
YASS NSW 2582
Phone: 6226 1711
Fax: 6226 3174
SEG: Queanbeyan
State Electorate: Burrinjuck
Federal Electorate: Hume
Classification: Secondary Class 9
Email: yass-h.school@det.nsw.edu.au

Yass Public School 3549

Principal: Ms Jennifer Garnett-Darke
Laidlaw St (Locked Bag 4)
YASS NSW 2582
Phone: 6226 1017
Fax: 6226 3258
SEG: Queanbeyan
State Electorate: Burrinjuck
Federal Electorate: Hume
Classification: Primary Class 4
Email: yass-p.school@det.nsw.edu.au

Principal	School	Phone
Adamson, Ros	Wollondilly PS	4821 4496
Alderton, Christine	Tallong PS	4841 0292
Allen, Grahame	St Georges Basin PS	4443 4251
Appleton, Jill	Bomaderry HS	4421 0699
Argerakis, Heather	Flinders PS	4295 7355
Arrowsmith, Martin	Woonona HS	4283 1623
Arthur, Christine	Mount St Thomas PS	4229 2192
Ash, Wayne	Dapto PS	4261 2247
Ashby, Julie	Havenlee School	4421 3777
Aston, Therese	Central Tilba PS	4473 7210
Atfield, Greg	Crookwell PS	4832 1213
Atkinson, Garry	Bungendore PS	6238 1317
Attard, Andrew	Berkeley West PS	4271 1478
Bailey, Peter	Illawarra Sports HS	4271 1099
Bannon, Roz	Tanja PS	6494 0122
Barby, Jason	Mogo PS	4474 4815
Barclay, Mary-Lou	Milton PS	4455 1504
Beard, Sally	Bibbenluke PS	6458 5230
Bell, Kim	Illawarra Hospital School	4222 5218
Bills, Paul	Yass HS	6226 1711
Blinkhorn, Norma	Tarrawanna PS	4284 4662
Bond, John	Kangaroo Valley PS	4465 1182
Bourke, Sueanne	Candelo PS	6493 2236
Bouvet, Stephen	Figtree HS	4271 2787
Bowden, Peter	Balarang PS	4256 1846
Bowen, Tom	Tangara School	4871 1636
Bowey, Ross	Highlands School	4872 3088
Bradley, Susan	Coledale PS	4267 1885
Bradwell, Lorraine	Lake Illawarra South PS	4295 1924
Brightwell, Paul	Figtree PS	4271 6888

Principal	School	Phone
Broadbent, Annette	Gunning PS	4845 1129
Broadfoot, Geoff	Bodalla PS	4473 5257
Broadhead, Alan	Unanderra PS	4272 8730
Brougham, Melanie	Rugby PS	4835 7241
Browne, Peter	Goulburn HS	4821 4022
Bruffey, Sheryl	Budawang School	4455 1491
Campbell-Jones, Christine	Avoca PS	4887 7224
Carroll, Sherylee	Keiraville PS	4229 4117
Cartwright, Suzanne	Tirranna PS	4821 4645
Cass, Dorothy	Primbee PS	4274 1974
Cherubini, Janice	Thirroul PS	4267 1469
Clark, John	Queanbeyan HS	6297 2088
Claydon, Ray	Berinba PS	6226 2110
Clune, John	Tullimbar PS	4257 7261
Coll, Tom	Mulwaree HS	4821 4499
Condello, Natalie	Dalgety PS	6456 5031
Connery, Laurie	Moss Vale PS	4868 1866
Connor, Christopher	Helensburgh PS	4294 1332
Coogan, Ian	Lakelands PS	4261 1540
Cooper, Jenny	Sutton PS	6230 3215
Cooper, Jim	Albion Park PS	4256 1244
Corkery, Sue	Peterborough School	4297 1611
Cosier, Harold	Wollongong PS	4228 9120
Counsell, Roy	Sunshine Bay PS	4472 6464
Courtney, Wayne	Berry PS	4464 1158
Couvee, Meg	Bredbo PS	6454 4107
Cox, Peter	Captains Flat PS	6236 6253
Crockford, Jacqueline	Sutton Forest PS	4868 1430
Currie, Robert	Falls Creek PS	4447 8243
Cusack, Robert	Barrack Heights PS	4296 4222

Principal	School	Phone
Darcey , Bede	Breadalbane PS	4844 2243
Darling , Debbie	Marulan PS	4841 1573
Davidson , John	Eden PS	6496 1169
Day , Melissa	Nimmitabel PS	6454 6205
DeCean , Lorna	Burrawang PS	4886 4261
DeLandre , Stuart	Illawarra EEC	4237 6100
Dewar , Stuart	Mount Terry PS	4257 4370
Dirou , Les	Pambula PS	6495 6006
Downey , Margaret	Cooma PS	6452 1933
Dransfield , John	Wolumla PS	6494 9226
Dunbar-Reid , Melissa	Collector PS	4848 0024
Duncan , Elizabeth	Bigga PS	4835 2236
Elliott-Newth , Sue	Bulli PS	4267 1723
Fahey , Michelle	Rye Park PS	6227 2251
Fahey , Tony	Narooma HS	4476 4377
Field , Bill	Vincentia PS	4441 7188
Fisher , Terry	Woonona PS	4284 4316
FitzSimons , Andrew	Dapto HS	4261 1416
Fullagar , Joy	Gerringong PS	4234 1376
Galbraith , Grant	Glenquarry PS	4887 1205
Gardner , Jenne	Jindabyne CS	6456 2346
Garnett-Darke , Jennifer	Yass PS	6226 1017
Gibson , Marilyn	Narooma PS	4476 2556
Glenday , Stephen	Vincentia HS	4441 6766
Goodley , Stephen	Warrawong HS	4274 0707
Gore , David	Shell Cove PS	4297 2247
Grant , Marian	Wollongong HSPA	4229 6844
Green , Dale	Farmborough Road PS	4271 1133
Green , Jennifer	Boorowa CS	6385 3009
Griersen , Mark	Russell Vale PS	4284 4396

Principal	School	Phone
Griffiths , Ken	Albion Park HS	4257 1744
Grosse , Pam	Jamberoo PS	4236 0173
Grosse , Warren	Minnamurra PS	4237 7501
Hagan , Jan	Berkeley PS	4271 1171
Harding , Narelle	Ulladulla PS	4455 1649
Harington , Kim	Tomerong PS	4443 4376
Harris , Col	Oak Flats HS	4256 1888
Harrison , Steve	Goulburn West PS	4821 1781
Heddles , Peter	Lake Heights PS	4274 1740
Heffernan , Ron	Corrimal HS	4285 1199
Hennessy , Dianne	Bowral HS	4861 2255
Hilliar , Susan	Cambewarra PS	4446 0038
Hobbis-Bussell , Jennifer	Quaama PS	6493 8213
Hockings , Gareth	Towamba PS	6496 7159
Hodge , Karen	Warrawong PS	4274 1399
Hogg , David	North Nowra PS	4422 7045
Holmes , Peter	Mount Ousley PS	4285 4211
Honeywood , Michael	Nowra East PS	4421 3539
Hooker , Michael	Goulburn North PS	4821 3838
Houweling , Peter	Mount Kembla PS	4271 2565
Hulme , Michelle	Merimbula PS	6495 1266
Hunter , Christine	Jerrabomberra PS	6299 8860
Hurley , Anne-Marie	Otford PS	4294 1323
Irvine , Gillian	Penrose PS	4884 4238
Isemonger , Glenn	Warilla HS	4296 3055
Jackson , Genevieve	Queanbeyan South PS	6297 3655
Johnson , Graham	Goulburn South PS	4821 2759
Johnson , Peter	Moruya PS	4474 2363
Jones , Peter	Kanahooka HS	4261 4011
Jones , Ray	Crookwell HS	4832 1421
Kells , Paul	Karabar HS	6298 4333

Principal	School	Phone
King , Peter	Monaro HS	6452 4611
Kominek , Sue	Gundaroo PS	6236 8115
Lamb , David	Cringila PS	4274 1768
Lazenby , Suzanne	Mount Warrigal PS	4296 6266
Letters , Ron	Culburra PS	4447 2010
Liddle , Sharyn	Woonona East PS	4284 1472
Lloyd , Narelle	Goulburn PS	4821 2827
Lockerbie , Alana	Bega West PS	6492 1499
Long , Robert	Nareena Hills PS	4226 3867
Lowe , Bob	Illaroo Road PS	4421 0422
MacDonald , John	Shellharbour PS	4295 1334
Mackinder , Howard	Queanbeyan East PS	6297 2619
Mansfield , Garry	Bomaderry PS	4421 6577
Maude , Jenny	Kiama PS	4232 1471
Mayhew , Stephen	Coniston PS	4229 1117
McAndrew , David	Robertson PS	4885 1284
McCann , Tony	Nowra Hill PS	4421 5671
McCarthy , Mark	Shoalhaven Heads PS	4448 7174
McCartney , Tony	Windellama PS	4844 5130
McCluggage , Ian	Berridale PS	6456 3228
McClure , Rod	Braidwood CS	4842 2249
McGee , Vicky	Warilla PS	4295 1867
McGee-Payne , Patrica	Gwynneville PS	4229 5728
McGill , James	Scarborough PS	4267 2153
McLaughlin , Linda	Para Meadows School	4229 1922
McLean , Chris	Sussex Inlet PS	4441 2053
Meadows , Jan	Kangaloon PS	4888 2215
Mitchell , Rae	Smiths Hill HS	4229 4266
Moore , Brendan	Koonawarra PS	4261 2880
Morris , John	Bowral PS	4861 1086
Morris , Paul	Bega HS	6492 1800

Principal	School	Phone
Mott , Troy	Bega PS	6492 1280
Mulheron , Maurie	Keira HS	4229 4644
Mullane , Michael	Sanctuary Point PS	4443 0546
Murphy , Kate	Greenwell Point PS	4447 1379
Murphy-Cann , Jacqueline	Wingello PS	4884 4317
Murray , Paul	Albion Park Rail PS	4256 1287
Muscat , Vicki	Queanbeyan West PS	6297 2020
O'Brien , Peter	Warilla North PS	4295 1657
O'Connor , David	Towradgi PS	4284 4527
O'Dea , Janet	Dalton PS	4845 6210
O'Hara , Belinda	Berkeley South PS	4271 1659
Olsen , Garrie	Mittagong PS	4871 1020
O'Meara , Bryan	Bemboka PS	6493 0229
Parker , Jeanette	Binda PS	4835 6052
Patatoukos , Eric	Bradfordville PS	4821 4936
Patchett , Ann	Taralga PS	4840 2047
Percival , Les	Cooma North PS	6452 1742
Petersen , Paul	Austinmer PS	4267 1311
Pilgrim , Peter	The Crescent School	4821 3680
Plummer , Claire	Michelago PS	6235 9153
Pritchard , Clare	Bowning PS	6227 6093
Pritchard , Mark	Queanbeyan PS	6297 2144
Provest , Tracy	Ulladulla HS	4455 1799
Prowse , Terry-Lee	Wyndham PS	6494 2128
Pryce , Wayne	Nowra HS	4421 4977
Purcell , Tom	Batemans Bay PS	4472 4059
Quill , Ian	Tarago PS	4849 4418
Quist , Jenny	Colo Vale PS	4889 4250
Reade , Cathy	Wollongong West PS	4229 2096
Reakes , Brian	Hill Top PS	4889 8227
Reckord , Doug	Bournda EEC	6494 5009

Principal	School	Phone
Redfern , Craig	Mount Keira PS	4229 1446
Robertson , Clive	Nowra PS	4422 0401
Robson , Keryl	Lindsay Park PS	4229 2487
Rogers , Jan	Numeralla PS	6453 3211
Rutherford , Neil	Bermagui PS	6493 4271
Ryan , Tim	Berrima PS	4877 1262
Sander , Bruce	Bulli HS	4284 8266
Schaefer , Grant	Exeter PS	4883 4280
Schmich , Kate	Balgownie PS	4284 4245
Schofield , David	Corrimal East PS	4284 4582
Sellers , Carol	Delegate PS	6458 8183
Seymour , Phil	Fairy Meadow School	4284 2009
Shevlin , Donna	Corrimal PS	4284 4231
Simpson , Neil	Batemans Bay HS	4472 7233
Sleigh , Tom	Lake Illawarra HS	4296 3844
Spencer , Katherine	Mount Brown PS	4261 3855
Steel , Phil	Bombala HS	6458 3358
Stewart , Aloma	Bellambi PS	4284 8666
Sullivan , Mark	Wee Jasper PS	6227 9652
Sutherland , Graeme	Kiama HS	4232 1911
Sweet , John	Shoalhaven HS	4421 8022
Takacs , Lynne	Broulee PS	4471 6120
Thomas , Wayne	Figtree Heights PS	4228 6770
Thompson , Eleanor	Kemblawarra PS	4274 2024
Thompson , Melody	Reids Flat PS	6345 2231
Thomson , Gary	Tathra PS	6494 1291
Thorvaldson , Sonja	Jerangle PS	6454 3127
Thursdton , Linda	Eden Marine HS	6496 1541
Tink , Graham	Hayes Park PS	4261 4222
Tolhurst , Susan	Windang PS	4295 1852
Tomlinson , Keith	Stanwell Park PS	4294 1191

Principal	School	Phone
Tozer , Jo	Ando PS	6458 6634
Tucker , Kevin	Port Kembla PS	4274 1041
Venables , Lee	Pleasant Heights PS	4284 6962
Versluis , Robyn	Bundanoon PS	4883 6192
Walker , Craig	Callala PS	4446 4352
Walsh , John	Moruya HS	4474 2155
Warner , Nanette	Waniora PS	4284 3318
Watson , Robyn	Laggan PS	4837 3215
Webster , Mark	Illawarra Senior College	4274 0621
Wells , Greg	Oak Flats PS	4256 1405
White , Rod	Terara PS	4421 6034
Whymark , Robert	Cobargo PS	6493 6482
Williams , Sharon	Goulburn East PS	4821 4007
Williams , Suzanne	Moss Vale HS	4868 1717
Wimmer , Helen	Huskisson PS	4441 5074
Wyatt , Mark	Adaminaby PS	6454 2265
Zanco , Adam	Bombala PS	6458 3423

**Batemans Bay
David Ashford**

Batemans Bay HS
 Batemans Bay PS
 Bermagui PS
 Bodalla PS
 Braidwood CS
 Broulee PS
 Budawang School
 Central Tilba PS
 Huskisson PS
 Milton PS
 Mogo PS
 Moruya HS
 Moruya PS
 Narooma HS
 Narooma PS
 Sanctuary Point PS
 St Georges Basin PS
 Sunshine Bay PS
 Sussex Inlet PS
 Tomerong PS
 Ulladulla HS
 Ulladulla PS
 Vincentia HS
 Vincentia PS

**Goulburn Highlands
Ann Henniker**

Avoca PS
 Berrima PS
 Bowral HS
 Bowral PS
 Bradfordville PS
 Bundanoon PS
 Burrawang PS
 Colo Vale PS
 Exeter PS
 Glenquarry PS
 Goulburn East PS
 Goulburn HS
 Goulburn North PS
 Goulburn PS
 Goulburn South PS
 Goulburn West PS
 Highlands School
 Hill Top PS
 Kangaloon PS
 Marulan PS
 Mittagong PS
 Moss Vale HS
 Moss Vale PS
 Mulwaree HS
 Penrose PS
 Robertson PS
 Sutton Forest PS
 Tallong PS
 Tangara School
 The Crescent School
 Wingello PS
 Wollondilly PS

**Queanbeyan
Paul Greer**

Berinba PS
 Bigga PS
 Binda PS
 Boorowa CS
 Bowning PS
 Breadalbane PS
 Bungendore PS
 Captains Flat PS
 Collector PS
 Crookwell HS
 Crookwell PS
 Dalton PS
 Five Mile Tree PS
 Gundaroo PS
 Gunning PS
 Jerrabomberra PS
 Karabar HS
 Laggan PS
 Michelago PS
 Queanbeyan East PS
 Queanbeyan HS
 Queanbeyan PS
 Queanbeyan South PS
 Queanbeyan West PS
 Reids Flat PS
 Rugby PS
 Rye Park PS
 Sutton PS
 Tarago PS
 Taralga PS
 Tirranna PS
 Wee Jasper PS
 Windellama PS
 Yass HS
 Yass PS

**Sapphire Coast/ Monaro
Bob Aston**

Adaminaby PS
 Ando PS
 Bega HS
 Bega PS
 Bega West PS
 Bemboka PS
 Berridale PS
 Bibbenluke PS
 Bombala HS
 Bombala PS
 Bournda EEC
 Bredbo PS
 Candelo PS
 Cobargo PS
 Cooma North PS
 Cooma PS
 Dalgety PS
 Delegate PS
 Eden Marine HS
 Eden PS
 Jerangle PS
 Jindabyne CS
 Merimbula PS
 Monaro HS
 Nimmitabel PS
 Numeralla PS
 Pambula PS
 Quaama PS
 Tanja PS
 Tathra PS
 Towamba PS
 Wolumla PS
 Wyndham PS

**Shellharbour
Phil Hirst**

Albion Park HS
 Albion Park PS
 Albion Park Rail PS
 Balarang PS
 Barrack Heights PS
 Dapto HS
 Dapto PS
 Flinders PS
 Hayes Park PS
 Illawarra EEC
 Kanahooka HS
 Koonawarra PS
 Lake Illawarra HS
 Lake Illawarra South PS
 Lakelands PS
 Mount Brown PS
 Mount Terry PS
 Mount Warrigal PS
 Oak Flats HS
 Oak Flats PS
 Peterborough School
 Primbee PS
 Shell Cove PS
 Shellharbour PS
 Tullimbar PS
 Warilla HS
 Warilla North PS
 Warilla PS
 Windang PS

**Shoalhaven
John Hambly**

Berry PS
 Bomaderry HS
 Bomaderry PS
 Callala PS
 Cambewarra PS
 Culburra PS
 Falls Creek PS
 Gerringong PS
 Greenwell Point PS
 Havenlee School
 Illaroo Road PS
 Jamberoo PS
 Kangaroo Valley PS
 Kiama HS
 Kiama PS
 Minnamurra PS
 North Nowra PS
 Nowra East PS
 Nowra HS
 Nowra Hill PS
 Nowra PS
 Shoalhaven Heads PS
 Shoalhaven HS
 Terara PS

**Wollongong
David Phipps**

Berkeley PS
 Berkeley South PS
 Berkeley West PS
 Cringila PS
 Farmborough Road PS
 Figtree Heights PS
 Figtree HS
 Figtree PS
 Illawarra Hospital School
 Illawarra Senior College
 Illawarra Sports HS
 John Richardson School
 Kemblawarra PS
 Lake Heights PS
 Lindsay Park PS
 Mount Keira PS
 Mount Kembla PS
 Mount St Thomas PS
 Nareena Hills PS
 Port Kembla PS
 Smiths Hill HS
 Unanderra PS
 Warrawong HS
 Warrawong PS

**Wollongong North
Graham Kahabka**

Austinmer PS
 Balgownie PS
 Bellambi PS
 Bulli HS
 Bulli PS
 Coledale PS
 Coniston PS
 Corrimal East PS
 Corrimal HS
 Corrimal PS
 Fairy Meadow PS
 Gwynneville PS
 Helensburgh PS
 Keira HS
 Keiraville PS
 Mount Ousley PS
 Otford Public School
 Para Meadows School
 Pleasant Heights PS
 Russell Vale PS
 Scarborough PS
 Stanwell Park PS
 Tarrawanna PS
 Thirroul PS
 Towradgi PS
 Waniora PS
 Wollongong HSPA
 Wollongong PS
 Wollongong West PS
 Woonona East PS
 Woonona HS
 Woonona PS